



**STONE MARTIN
BUILDERS**



**565 Grand Avenue
Pike Road, AL 36057**

Rosehill

\$649,900

Plan: Walden

SQ FT: 3,863

Beds: 5

Baths: 3.5

Garage: 3

ABOUT THIS HOUSE

Methodical design, the "Walden" plan is unique in every way and offers different concepts than most other plans. Entertain in style where the elbow room is endless with an open feeling and limitless ranges. Dreamy primary suite makes arranging furniture a snap with massive wall space and soaring ceilings. The primary closet is larger than any bedroom in other plans and will take care of storing all necessities. Splendid kitchen is almost mesmerizing at first glance with its state of the art layout featuring custom angled granite island and stylish plumbing and lighting packages. Position the high capacity washer/dryer, as well as all cleaning gadgets in the oversized laundry room that allows a growing family another option for easy living. Loft area off the open hallway on the second floor fulfills the needs of a large family while allowing a place for the kids to hang out or provides a media/craft/home schooling room. Four spaciously appealing bedrooms also situated on this floor complete the unbelievable design that is aimed at accommodating all needs in a family dwelling.

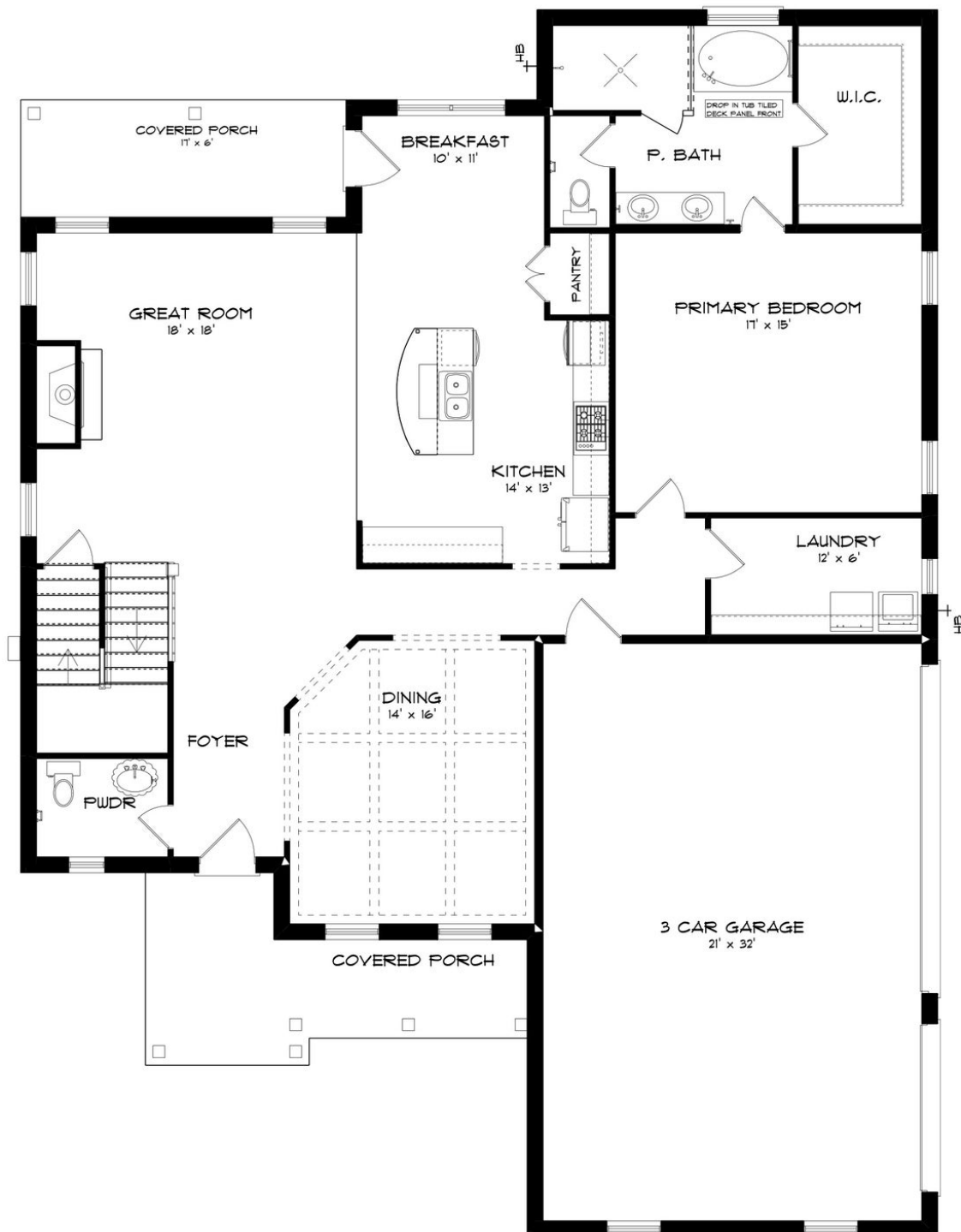
ABOUT ROSEHILL

Stone Martin Builders wants to help you Splash into Savings on a new home! Ask a Sales Professional about our special incentives and new home savings! Discover the charm of Rosehill, a boutique community boasting 12 spacious estate homesites, each over an acre in size. Nestled within the tranquil surroundings of Pike Road, this exclusive enclave of homes features exquisite craftsmanship and thoughtful design details, ensuring luxurious living spaces. Enjoy the elegance of four-sided brick exteriors, showcasing timeless architectural appeal. With floorplans ranging from approximately 2,500 to 4,700 square feet and the option of a 3-car garage, Rosehill offers versatility to suit various lifestyles. Whether you're seeking a peaceful retreat or an entertainer's paradise, Rosehill offers the perfect opportunity to create your dream homestead. Experience modern convenience with integrated smart home connectivity, ensuring seamless control of your home's features at your fingertips. Our commitment to high-quality construction and energy efficiency guarantees homes that exceed expectations, providing comfort and sustainability for years to come. Located within the prestigious Pike Road School district, Rosehill offers families access to top-tier education alongside the tranquility of countryside living. Ready to experience the Stone Martin Builders difference? Schedule a visit to Rosehill and meet with our knowledgeable Sales Professionals. Explore available homes and embark o...

Prices, plans, dimensions, features, specifications, materials, and availability of homes or communities are subject to change without notice or obligation. Illustrations are artists depictions only and may differ from completed improvements. All prices subject to change without notice. Please contact your sales associate before writing an offer.



FIRST FLOOR (F-3 CAR)



Prices, plans, dimensions, features, specifications, materials, and availability of homes or communities are subject to change without notice or obligation. Illustrations are artists depictions only and may differ from completed improvements. All prices subject to change without notice. Please contact your sales associate before writing an offer.



SECOND FLOOR (F-3 CAR)

