



**STONE MARTIN
BUILDERS**



**1258 Tullahoma Drive
Prattville, AL 36066**

Glennbrooke

\$646,044

Plan: Mayfair

SQ FT: 3,670

Beds: 5

Baths: 4.5

Garage: 2

ABOUT THIS HOUSE

Discover the charm of the "Mayfair" plan—a home thoughtfully crafted for comfortable living in every way. From the inviting grand entrance with a 2-story foyer to the practical open floorplan, this home seamlessly combines grandeur with functionality. Entertain effortlessly with a stylish dining room, a granite-topped butler's pantry, and a spacious kitchen serving island. Bedroom needs are met with a primary suite and a guest suite on the main level. Enjoy a primary suite that's both spacious and cozy, ensuring privacy and meeting various lifestyle demands. Upstairs, find three generously sized bedrooms, a flexible loft area, and practical use of space. In every aspect, this plan promises a fabulous living experience that won't disappoint. Get ready to feel right at home with the "Mayfair" plan!

ABOUT GLENNBROOKE

Stone Martin Builders wants to help you Splash into Savings on a new home! Ask a Sales Professional about our special incentives and new home savings! Welcome to Glennbrooke, where modern living meets Southern charm in Prattville, Alabama. Nestled in a master-planned community, Glennbrooke offers new construction homes designed for the way you live. Conveniently located near shopping, dining, Gunter and Maxwell Air Force Bases, and downtown Montgomery, Glennbrooke provides easy access to all the essentials of modern living. Discover spacious floorplans with thoughtful design details, including gourmet kitchens and high-quality construction by Stone Martin Builders. Each home is crafted with energy efficiency in mind, ensuring comfort and cost savings for years to come. Experience the future with integrated smart home connectivity, enhancing your daily living experience with modern conveniences. From climate control to advanced security features, these technologies elevate your lifestyle while providing peace of mind. Cool off on hot summer days at the community pool, laugh and play at the playground, or enjoy family fun at the splash pad. Immerse yourself in the welcoming community of Glennbrooke, where neighbors become friends and the landscaping is meticulously maintained. With low yearly dues and a wealth of amenities, Glennbrooke offers a lifestyle that's hard to resist. Ready to experience the Stone Martin difference? Schedule a visit to Glennbrooke and meet with ou...

Prices, plans, dimensions, features, specifications, materials, and availability of homes or communities are subject to change without notice or obligation. Illustrations are artists depictions only and may differ from completed improvements. All prices subject to change without notice. Please contact your sales associate before writing an offer.



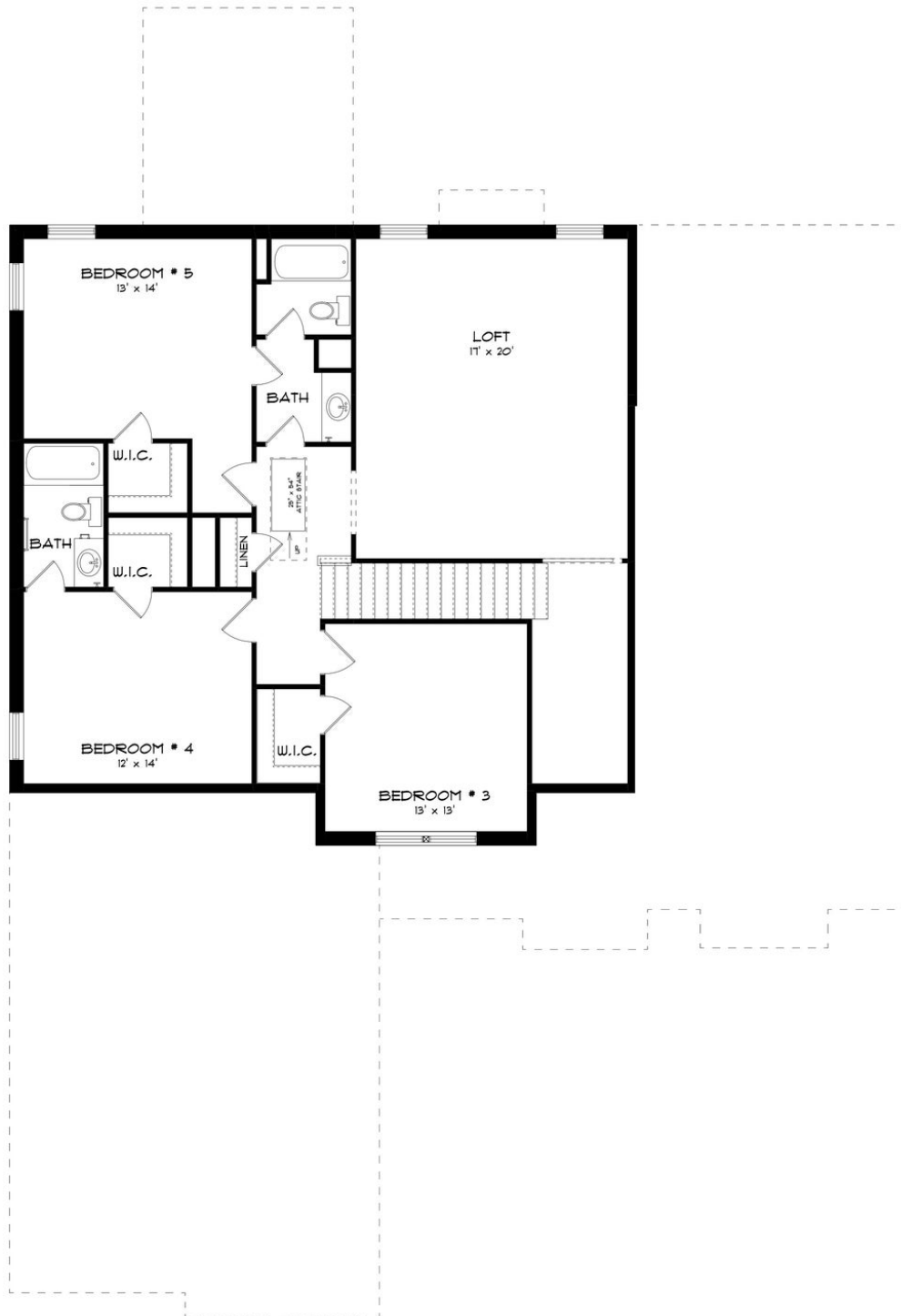
FIRST FLOOR (H)



Prices, plans, dimensions, features, specifications, materials, and availability of homes or communities are subject to change without notice or obligation. Illustrations are artists depictions only and may differ from completed improvements. All prices subject to change without notice. Please contact your sales associate before writing an offer.



SECOND FLOOR (H)



Prices, plans, dimensions, features, specifications, materials, and availability of homes or communities are subject to change without notice or obligation. Illustrations are artists depictions only and may differ from completed improvements. All prices subject to change without notice. Please contact your sales associate before writing an offer.



BASEMENT (H)



Prices, plans, dimensions, features, specifications, materials, and availability of homes or communities are subject to change without notice or obligation. Illustrations are artists depictions only and may differ from completed improvements. All prices subject to change without notice. Please contact your sales associate before writing an offer.