



**STONE MARTIN
BUILDERS**



**1262 Tullahoma Drive
Prattville, AL 36066**

Glennbrooke

Plan: Walden

SQ FT: 3,721

Beds: 5

Baths: 3.5

Garage: 2

ABOUT THIS HOUSE

Methodical design, the "Walden" plan is unique in every way and offers different concepts than most other plans. Entertain in style where the elbow room is endless with an open feeling and limitless ranges. Dreamy primary suite makes arranging furniture a snap with massive wall space and soaring ceilings. The primary closet is larger than any bedroom in other plans and will take care of storing all necessities. Splendid kitchen is almost mesmerizing at first glance with its state of the art layout featuring custom angled granite island and stylish plumbing and lighting packages. Position the high capacity washer/dryer, as well as all cleaning gadgets in the oversized laundry room that allows a growing family another option for easy living. Loft area off the open hallway on the second floor fulfills the needs of a large family while allowing a place for the kids to hang out or provides a media/craft/home schooling room. Four spaciouly appealing bedrooms also situated on this floor complete the unbelievable design that is aimed at accommodating all needs in a family dwelling.

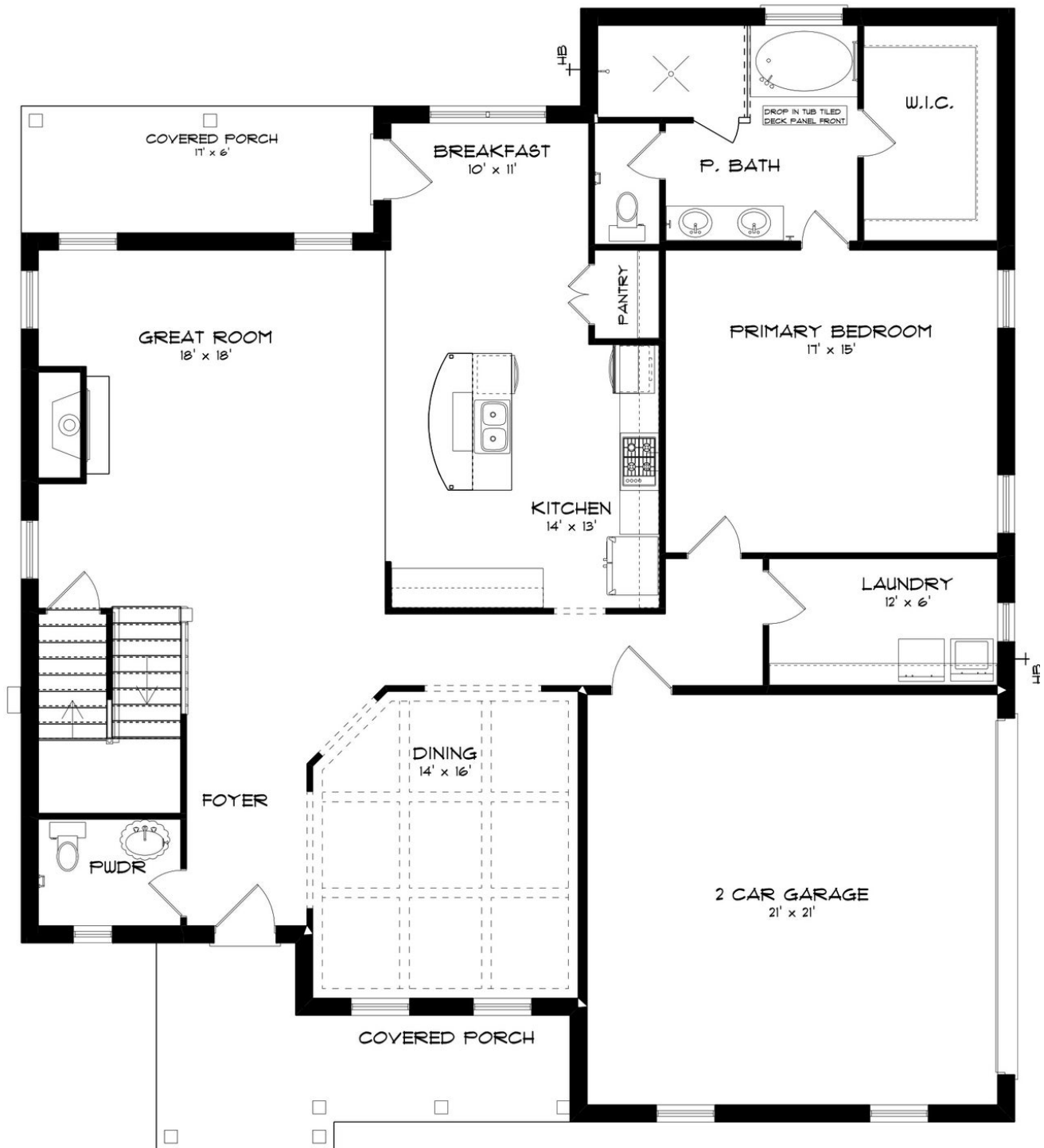
ABOUT GLENNBROOKE

Stone Martin Builders wants to help you Splash into Savings on a new home! Ask a Sales Professional about our special incentives and new home savings! Welcome to Glennbrooke, where modern living meets Southern charm in Prattville, Alabama. Nestled in a master-planned community, Glennbrooke offers new construction homes designed for the way you live. Conveniently located near shopping, dining, Gunter and Maxwell Air Force Bases, and downtown Montgomery, Glennbrooke provides easy access to all the essentials of modern living. Discover spacious floorplans with thoughtful design details, including gourmet kitchens and high-quality construction by Stone Martin Builders. Each home is crafted with energy efficiency in mind, ensuring comfort and cost savings for years to come. Experience the future with integrated smart home connectivity, enhancing your daily living experience with modern conveniences. From climate control to advanced security features, these technologies elevate your lifestyle while providing peace of mind. Cool off on hot summer days at the community pool, laugh and play at the playground, or enjoy family fun at the splash pad. Immerse yourself in the welcoming community of Glennbrooke, where neighbors become friends and the landscaping is meticulously maintained. With low yearly dues and a wealth of amenities, Glennbrooke offers a lifestyle that's hard to resist. Ready to experience the Stone Martin difference? Schedule a visit to Glennbrooke and meet with ou...

Prices, plans, dimensions, features, specifications, materials, and availability of homes or communities are subject to change without notice or obligation. Illustrations are artists depictions only and may differ from completed improvements. All prices subject to change without notice. Please contact your sales associate before writing an offer.



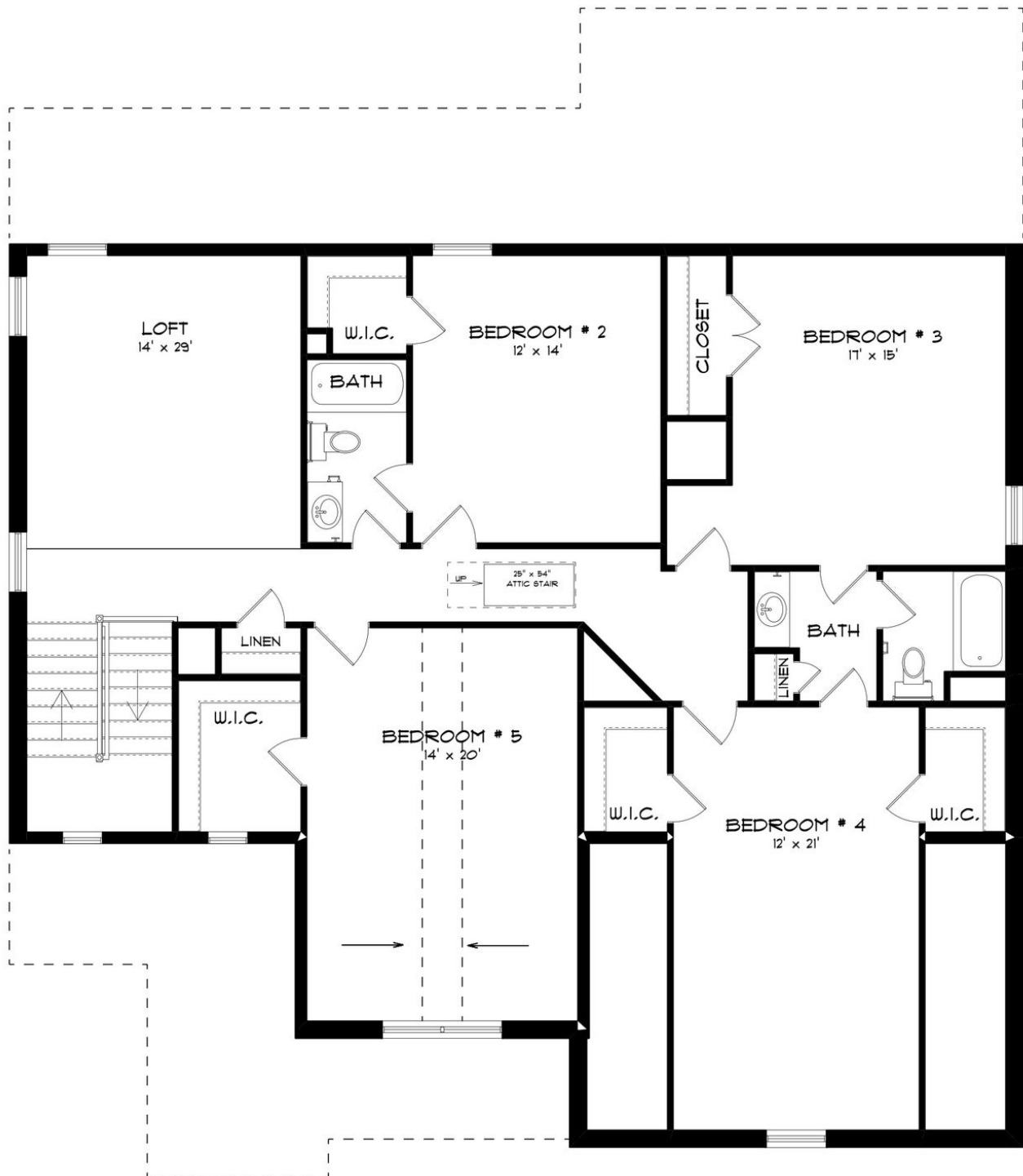
FIRST FLOOR (F)



Prices, plans, dimensions, features, specifications, materials, and availability of homes or communities are subject to change without notice or obligation. Illustrations are artists depictions only and may differ from completed improvements. All prices subject to change without notice. Please contact your sales associate before writing an offer.



SECOND FLOOR (F)



Prices, plans, dimensions, features, specifications, materials, and availability of homes or communities are subject to change without notice or obligation. Illustrations are artists depictions only and may differ from completed improvements. All prices subject to change without notice. Please contact your sales associate before writing an offer.