



**STONE MARTIN
BUILDERS**



**1414 Charleston Drive
Prattville, AL 36066
Glennbrooke**

Plan: Bainbridge II
SQ FT: 3,489
Beds: 5
Baths: 4.0
Garage: 2

ABOUT THIS HOUSE

The "Bainbridge II" Plan is perfect for those who prefer elegance and space. This 5 bedroom, 4 bathroom plan features a sweeping great room and kitchen area that is perfect for cooking while also entertaining. A separate dining room is located at the front of the house connecting to the elegant foyer entry flowing into the open kitchen and great room. The kitchen features an attractive granite island that has plenty of seating space perfect for serving food while also entertaining guest in the great room. The grand primary suite provides a large private space along with a connecting bathroom complete with double vanity, separate shower, soaking tub and abundant storage space in the large walk in closet and linen closet. Three more bedrooms complete this floor plan, all with plentiful closet space along with two full bathrooms. The 2nd floor features a large bonus room with sitting area, a full bath & closet. This well laid floor plan can accommodate the space needed for a big family all in the space of one floor.

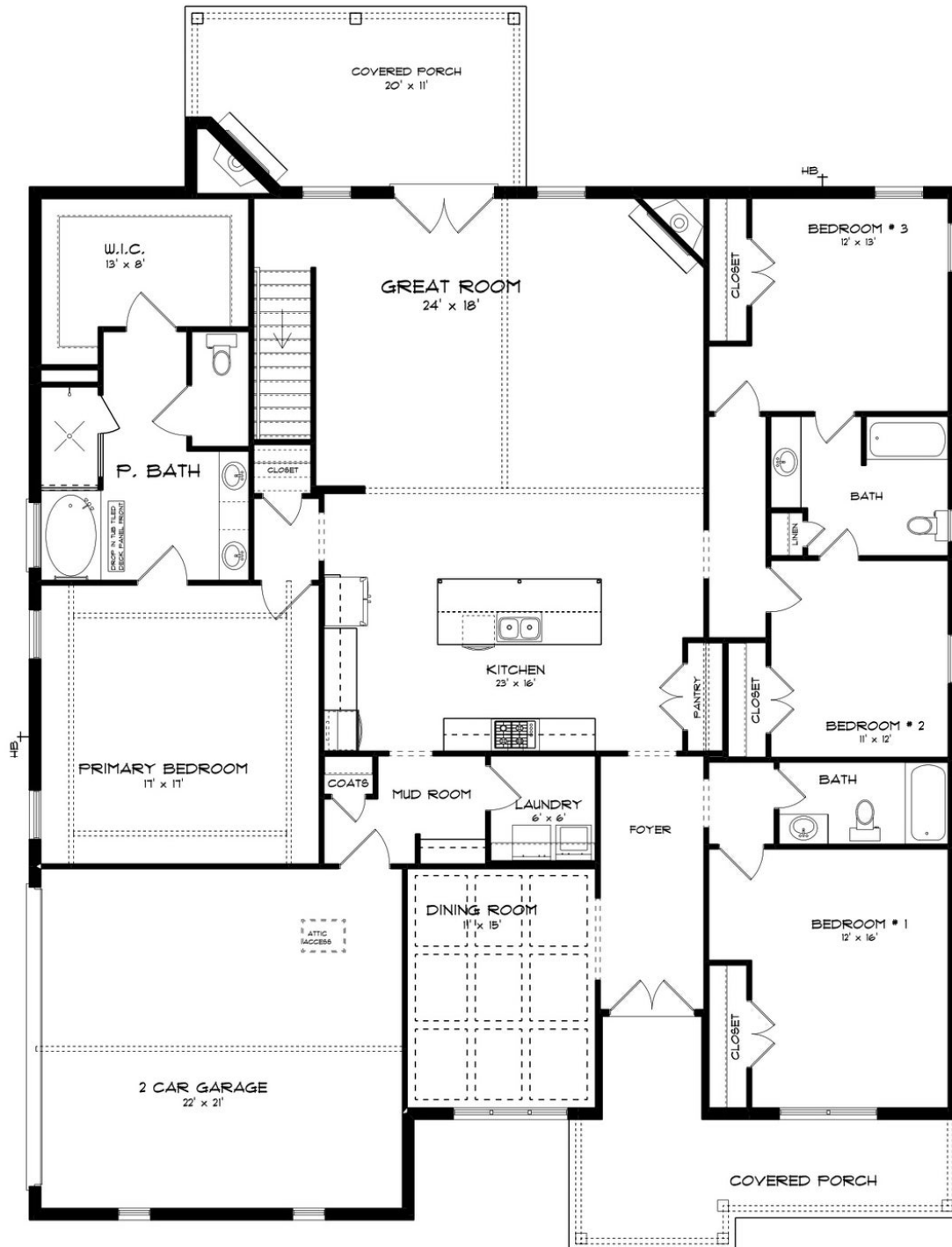
ABOUT GLENNBROOKE

Stone Martin Builders wants to help you get into the game of homeownership! Ask a Sales Professional about our special incentives and new home savings! Welcome to Glennbrooke, where modern living meets Southern charm in Prattville, Alabama. Nestled in a master-planned community, Glennbrooke offers new construction homes designed for the way you live. Conveniently located near shopping, dining, Gunter and Maxwell Air Force Bases, and downtown Montgomery, Glennbrooke provides easy access to all the essentials of modern living. Discover spacious floorplans with thoughtful design details, including gourmet kitchens and high-quality construction by Stone Martin Builders. Each home is crafted with energy efficiency in mind, ensuring comfort and cost savings for years to come. Experience the future with integrated smart home connectivity, enhancing your daily living experience with modern conveniences. From climate control to advanced security features, these technologies elevate your lifestyle while providing peace of mind. Cool off on hot summer days at the community pool, laugh and play at the playground, or enjoy family fun at the splash pad. Immerse yourself in the welcoming community of Glennbrooke, where neighbors become friends and the landscaping is meticulously maintained. With low yearly dues and a wealth of amenities, Glennbrooke offers a lifestyle that's hard to resist. Ready to experience the Stone Martin difference? Schedule a visit to Glennbrooke and meet with our kn...

Prices, plans, dimensions, features, specifications, materials, and availability of homes or communities are subject to change without notice or obligation. Illustrations are artists depictions only and may differ from completed improvements. All prices subject to change without notice. Please contact your sales associate before writing an offer.



FIRST FLOOR (H)



Prices, plans, dimensions, features, specifications, materials, and availability of homes or communities are subject to change without notice or obligation. Illustrations are artists depictions only and may differ from completed improvements. All prices subject to change without notice. Please contact your sales associate before writing an offer.



SECOND FLOOR (H)

