



**STONE MARTIN
BUILDERS**



**1463 Tullahoma Drive
Prattville, AL 36066
Glennbrooke**

Plan: Bellemeade II
SQ FT: 3,094
Beds: 4
Baths: 4.5
Garage: 2

ABOUT THIS HOUSE

Experience the captivating allure of the Bellemeade II, boasting 4 bedrooms and 4.5 bathrooms. Step into an inviting study from the covered porch. Entertain seamlessly in the expansive kitchen and great room with vaulted ceilings and a cozy fireplace. The kitchen dazzles with a grand island and large pantry, perfect for hosting gatherings. The primary suite indulges with double granite vanities, a garden tub, separate shower, and ample closet space. The first floor offers 3 additional bedrooms and 2 baths, ideal for guests. Upstairs, a spacious bonus room and full bath await, promising endless entertainment possibilities.

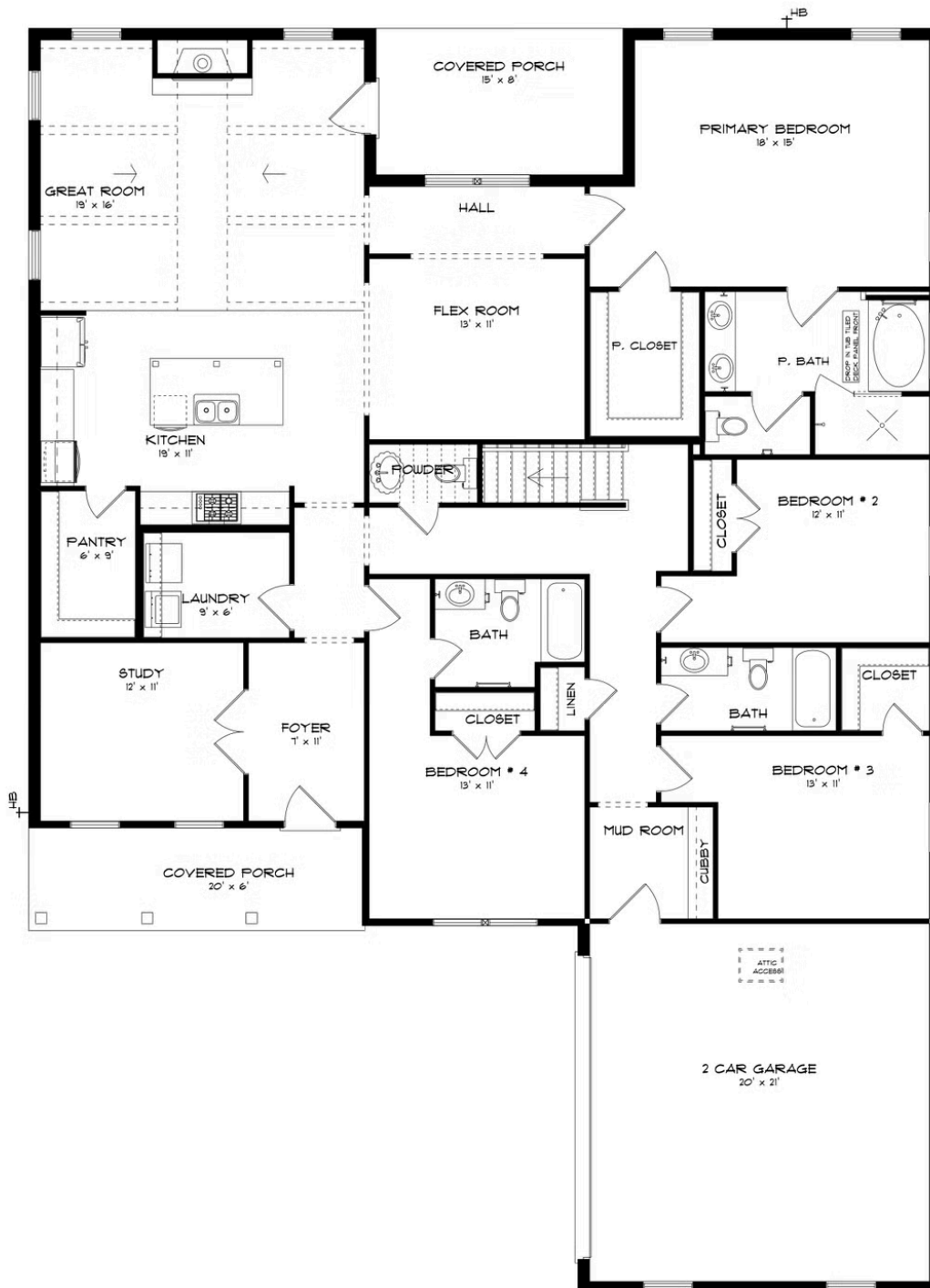
ABOUT GLENNBROOKE

Welcome to Glennbrooke, where modern living meets Southern charm in Prattville, Alabama. Nestled in a master-planned community, Glennbrooke offers new construction homes designed for the way you live. Conveniently located near shopping, dining, Gunter and Maxwell Air Force Bases, and downtown Montgomery, Glennbrooke provides easy access to all the essentials of modern living. Discover spacious floorplans with thoughtful design details, including gourmet kitchens and high-quality construction by Stone Martin Builders. Each home is crafted with energy efficiency in mind, ensuring comfort and cost savings for years to come. Experience the future with integrated smart home connectivity, enhancing your daily living experience with modern conveniences. From climate control to advanced security features, these technologies elevate your lifestyle while providing peace of mind. Cool off on hot summer days at the community pool, laugh and play at the playground, or enjoy family fun at the splash pad. Immerse yourself in the welcoming community of Glennbrooke, where neighbors become friends and the landscaping is meticulously maintained. With low yearly dues and a wealth of amenities, Glennbrooke offers a lifestyle that's hard to resist. Ready to experience the Stone Martin difference? Schedule a visit to Glennbrooke and meet with our knowledgeable Sales Professionals. Explore available homes, envision your future and embark on the journey to find your personal oasis in Prattville, AL.

Prices, plans, dimensions, features, specifications, materials, and availability of homes or communities are subject to change without notice or obligation. Illustrations are artists' depictions only and may differ from completed improvements. All prices subject to change without notice. Please contact your sales associate before writing an offer.



FIRST FLOOR (H)





SECOND FLOOR (H)

