



**STONE MARTIN
BUILDERS**



**1465 Tullahoma Drive
Prattville, AL 36066**

Glennbrooke

\$467,324

Plan: Alexandria II

SQ FT: 3,160

Beds: 4

Baths: 4.0

Garage: 2

ABOUT THIS HOUSE

The "Alexandria II" is sure to provide a delightful living experience with its one story design and easy access and flow from room to room. This Ranch-style home with 2nd floor bonus room is sure to please! The appealing entry foyer is sophisticated yet open and joins the formal dining room and offers an additional room useful as a study or living room. The open vaulted family room and kitchen with large center granite island is made for entertaining. The unique primary suite offers a large bedroom area, functional primary bath with split granite vanities, garden/soaking tub and tiled shower with glass door and his and hers walk in closets. The additional 3 bedrooms provide plenty of closet space and two additional bathrooms as well as an upstairs bonus room with full bath & closet. This highly desirable plan is perfect for multiple lifestyles.

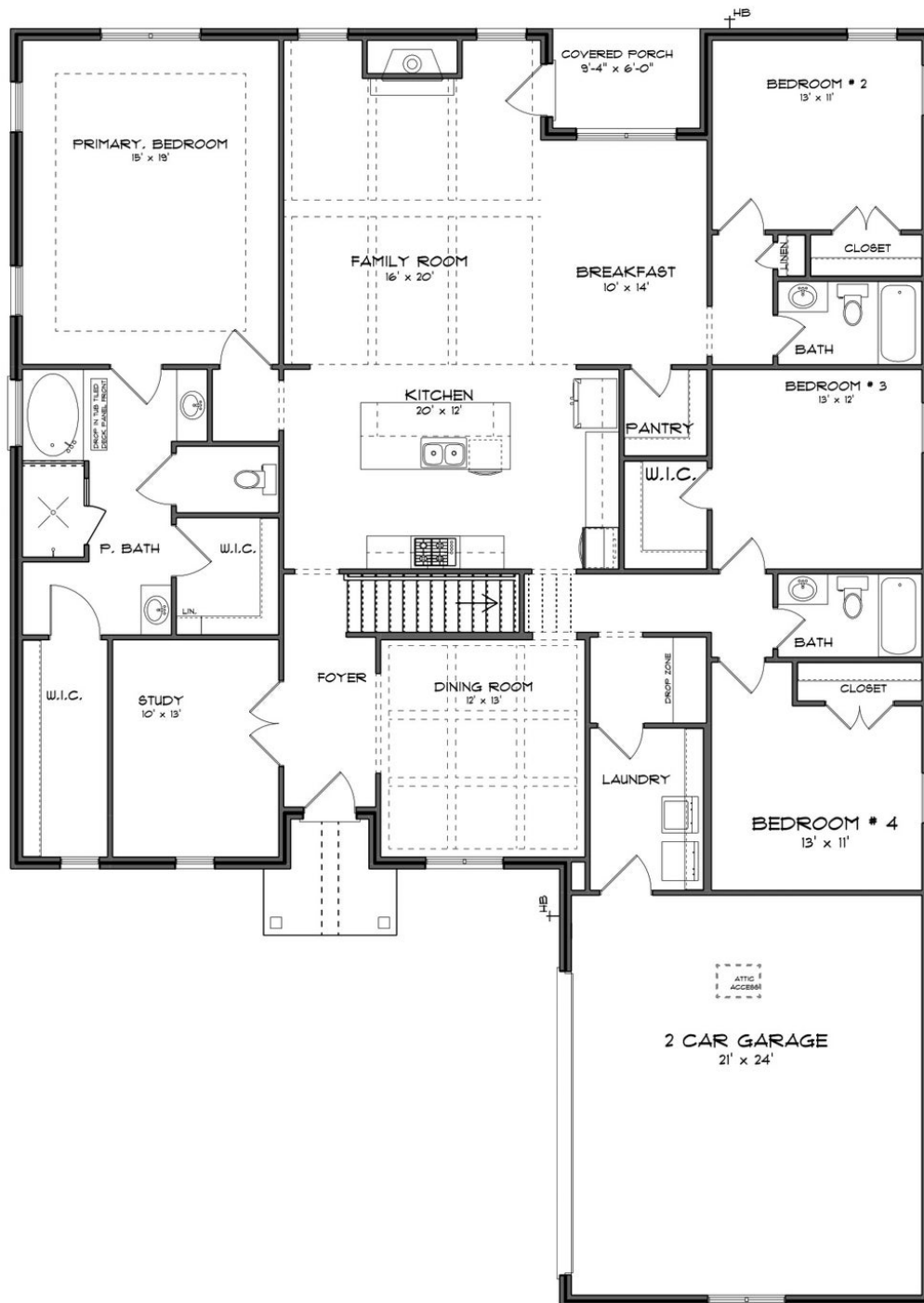
ABOUT GLENNBROOKE

Stone Martin Builders wants to help you Splash into Savings on a new home! Ask a Sales Professional about our special incentives and new home savings! Welcome to Glennbrooke, where modern living meets Southern charm in Prattville, Alabama. Nestled in a master-planned community, Glennbrooke offers new construction homes designed for the way you live. Conveniently located near shopping, dining, Gunter and Maxwell Air Force Bases, and downtown Montgomery, Glennbrooke provides easy access to all the essentials of modern living. Discover spacious floorplans with thoughtful design details, including gourmet kitchens and high-quality construction by Stone Martin Builders. Each home is crafted with energy efficiency in mind, ensuring comfort and cost savings for years to come. Experience the future with integrated smart home connectivity, enhancing your daily living experience with modern conveniences. From climate control to advanced security features, these technologies elevate your lifestyle while providing peace of mind. Cool off on hot summer days at the community pool, laugh and play at the playground, or enjoy family fun at the splash pad. Immerse yourself in the welcoming community of Glennbrooke, where neighbors become friends and the landscaping is meticulously maintained. With low yearly dues and a wealth of amenities, Glennbrooke offers a lifestyle that's hard to resist. Ready to experience the Stone Martin difference? Schedule a visit to Glennbrooke and meet with ou...

Prices, plans, dimensions, features, specifications, materials, and availability of homes or communities are subject to change without notice or obligation. Illustrations are artists depictions only and may differ from completed improvements. All prices subject to change without notice. Please contact your sales associate before writing an offer.



FIRST FLOOR (J)



Prices, plans, dimensions, features, specifications, materials, and availability of homes or communities are subject to change without notice or obligation. Illustrations are artists depictions only and may differ from completed improvements. All prices subject to change without notice. Please contact your sales associate before writing an offer.



SECOND FLOOR (J)

