



**STONE MARTIN
BUILDERS**



**1140 Maggie Drive
Prattville, AL 36066**

McClain Landing

Plan: Sutherland

SQ FT: 3,172

Beds: 4

Baths: 3.5

Garage: 2

ABOUT THIS HOUSE

Unveil modern charm in the Sutherland floorplan, ideal for entertaining. Step into a spacious great room with a cozy fireplace, seamlessly connected to an open kitchen featuring granite countertops across the large island. The dining room, accessible through a large butler's pantry, sets the stage for elegant gatherings. Retreat to a private primary suite on the first floor, while upstairs offers a bright loft area and three large bedrooms. Embrace outdoor living with a covered front porch and back patio, completing this inviting abode.

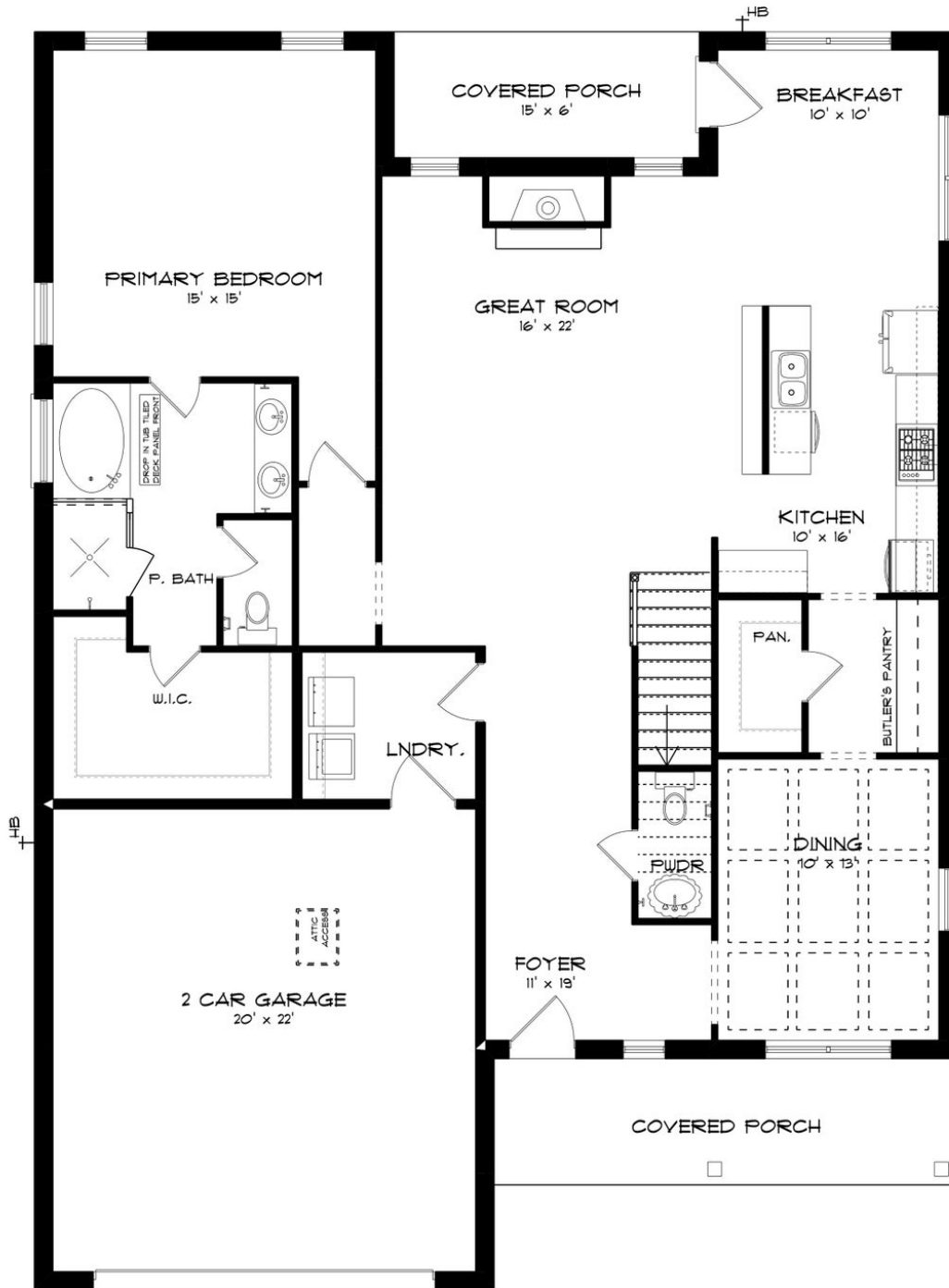
ABOUT MCCLAIN LANDING

Welcome to McClain Landing, a premier master-planned community offering new construction homes in Prattville, Alabama. Conveniently located near shopping, dining, the Robert Trent Jones – Capital Hill Golf Course, Gunter and Maxwell Air Force Bases, and downtown Montgomery, McClain Landing provides easy access to all the essentials of modern living. Just minutes from downtown Prattville, McClain Landing offers a tranquil yet convenient location to build your personalized home. Explore spacious floorplans with thoughtful design details, including gourmet kitchens and high-quality construction by Stone Martin Builders. Experience the future with integrated smart home connectivity and energy-efficient features, standard in every home at McClain Landing. From climate control to advanced security, these modern technologies enhance your daily living experience while reducing energy costs. Dive into relaxation at the community pool, challenge your neighbors to a game of pickleball, gather around the firepit for cozy evenings under the stars, or watch your kids play at the playground. With these amenities, McClain Landing offers a lifestyle that's hard to resist. Whether you're starting a family or looking for your forever home, McClain Landing provides the perfect setting to plant your roots and create lasting memories. Ready to experience the Stone Martin difference? Schedule a visit to McClain Landing and meet with our knowledgeable Sales Professionals. Explore available homes, ...

Prices, plans, dimensions, features, specifications, materials, and availability of homes or communities are subject to change without notice or obligation. Illustrations are artists depictions only and may differ from completed improvements. All prices subject to change without notice. Please contact your sales associate before writing an offer.



FIRST FLOOR (E)





SECOND FLOOR (E)

