



**STONE MARTIN
BUILDERS**



**906 Pearl Drive
Prattville, AL 36066**

McClain Landing

\$410,466

Plan: Rosewood

SQ FT: 2,751

Beds: 4

Baths: 3.0

Garage: 2

ABOUT THIS HOUSE

The Rosewood is a well-planned floor plan that is budding with four bedrooms, plus a bonus room, and three full bathrooms. The foyer opens into an expansive kitchen with a great island, granite countertops, and a pantry. The spacious kitchen flows into its own convenient breakfast area opening to a great room perfect for entertaining and comfortable living. Off the great room, bedrooms two, three, and four reside with spacious closets and a great hall connecting the bedrooms to the bath with a double vanity. Secluded at the corner of the home, the primary suite is a dream, with a huge walk in closet, spacious bedroom, and a bathroom with a soaking tub and large tiled shower. The first floor is complete with a covered porch and a two -car garage. Up the stairs, a bonus room with a walk-in closet and a full bath, is ready to serve a wide variety of purposes for your family. This plan is sure to suit the needs of your growing family.

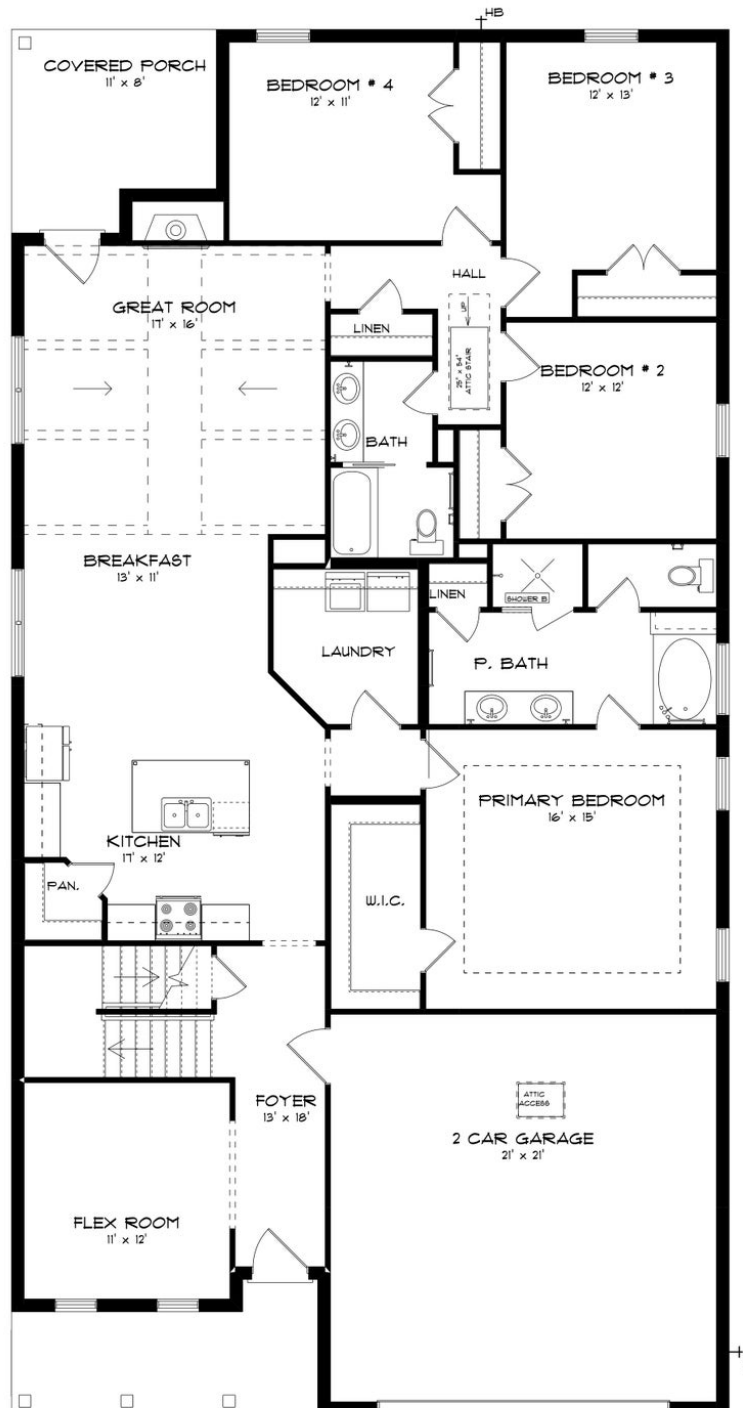
ABOUT MCCLAIN LANDING

Stone Martin Builders wants to help you get into the game of homeownership! Ask a Sales Professional about our special incentives and new home savings! Welcome to McClain Landing, a premier master-planned community offering new construction homes in Prattville, Alabama. Conveniently located near shopping, dining, the Robert Trent Jones – Capital Hill Golf Course, Gunter and Maxwell Air Force Bases, and downtown Montgomery, McClain Landing provides easy access to all the essentials of modern living. Just minutes from downtown Prattville, McClain Landing offers a tranquil yet convenient location to build your personalized home. Explore spacious floorplans with thoughtful design details, including gourmet kitchens and high-quality construction by Stone Martin Builders. Experience the future with integrated smart home connectivity and energy-efficient features, standard in every home at McClain Landing. From climate control to advanced security, these modern technologies enhance your daily living experience while reducing energy costs. Dive into relaxation at the community pool, challenge your neighbors to a game of pickleball, gather around the firepit for cozy evenings under the stars, or watch your kids play at the playground. With these amenities, McClain Landing offers a lifestyle that's hard to resist. Whether you're starting a family or looking for your forever home, McClain Landing provides the perfect setting to plant your roots and create lasting memories. Ready to exp...

Prices, plans, dimensions, features, specifications, materials, and availability of homes or communities are subject to change without notice or obligation. Illustrations are artists depictions only and may differ from completed improvements. All prices subject to change without notice. Please contact your sales associate before writing an offer.



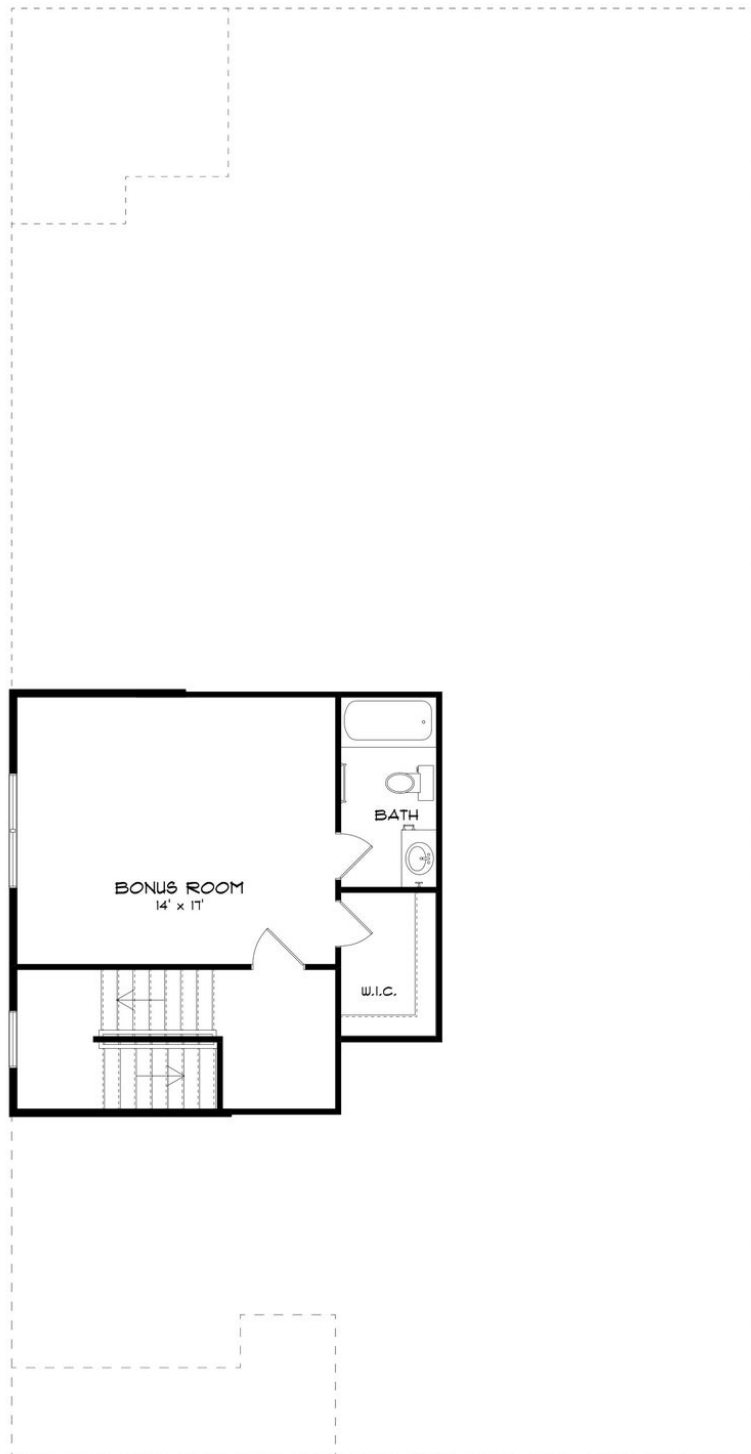
FIRST FLOOR (F)





STONE MARTIN
BUILDERS

SECOND FLOOR (F)



Prices, plans, dimensions, features, specifications, materials, and availability of homes or communities are subject to change without notice or obligation. Illustrations are artists depictions only and may differ from completed improvements. All prices subject to change without notice. Please contact your sales associate before writing an offer.