



**STONE MARTIN
BUILDERS**



**926 Pearl Drive
Prattville, AL 36066
McClain Landing**

\$375,800

**Plan: Lenox
SQ FT: 2,192
Beds: 4
Baths: 2.0
Garage: 2**

ABOUT THIS HOUSE

The "Lenox" is a one story open floorplan with ample possibilities. This 4 bedroom 2 bath plan begins with a refined foyer entry way, which opens into a roomy living area with a vaulted ceiling. Next experience the open kitchen with large center island and adjoining dining room. The kitchen offers built in appliances, granite countertops and an expanded pantry. The primary quarters provide a large bedroom and walk in closet as well as a luxurious bathroom complete with a double granite vanity, garden/soaking tub, and tiled shower with glass door. This layout truly is a must see!

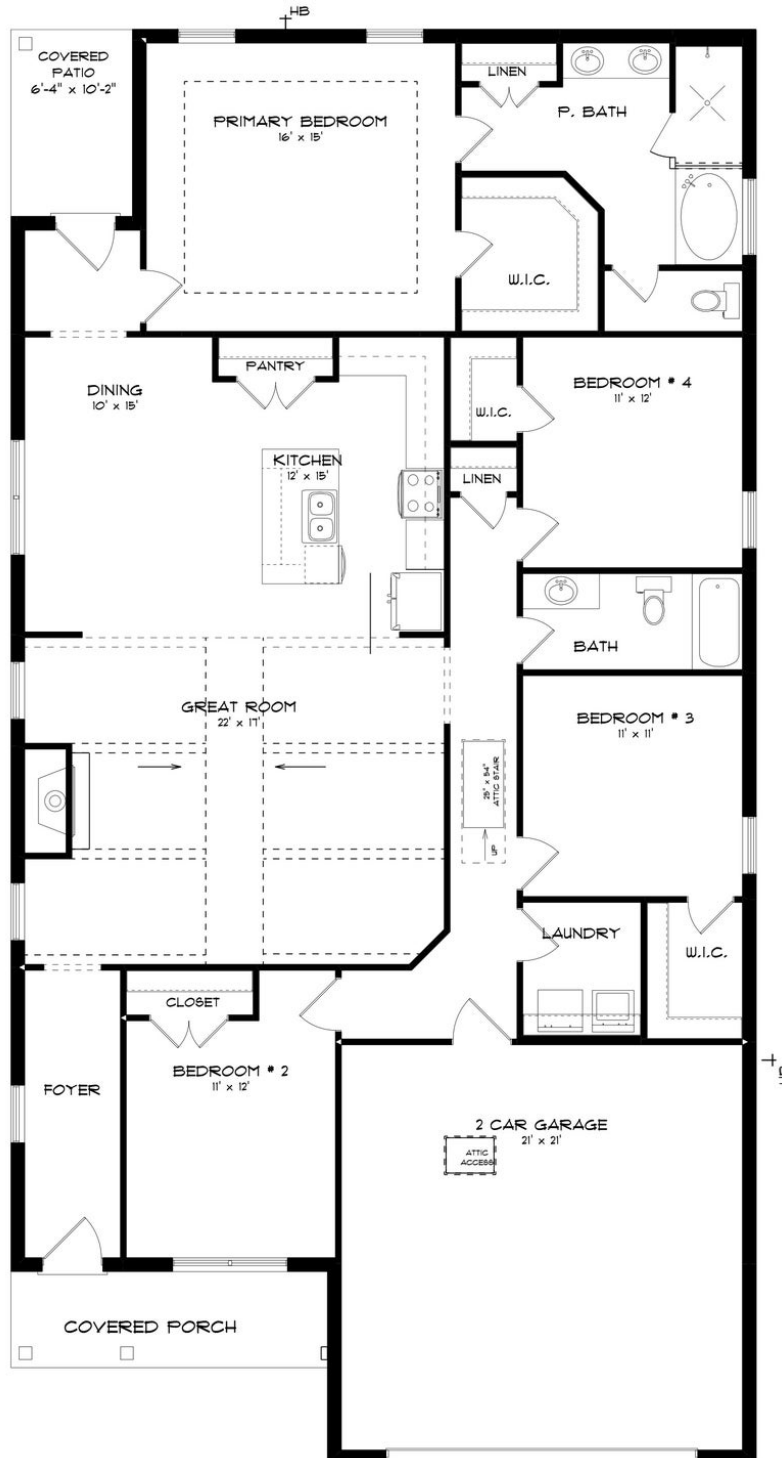
ABOUT MCCLAIN LANDING

Stone Martin Builders wants to help you Splash into Savings on a new home! Ask a Sales Professional about our special incentives and new home savings! Welcome to McClain Landing, a premier master-planned community offering new construction homes in Prattville, Alabama. Conveniently located near shopping, dining, the Robert Trent Jones – Capital Hill Golf Course, Gunter and Maxwell Air Force Bases, and downtown Montgomery, McClain Landing provides easy access to all the essentials of modern living. Just minutes from downtown Prattville, McClain Landing offers a tranquil yet convenient location to build your personalized home. Explore spacious floorplans with thoughtful design details, including gourmet kitchens and high-quality construction by Stone Martin Builders. Experience the future with integrated smart home connectivity and energy-efficient features, standard in every home at McClain Landing. From climate control to advanced security, these modern technologies enhance your daily living experience while reducing energy costs. Dive into relaxation at the community pool, challenge your neighbors to a game of pickleball, gather around the firepit for cozy evenings under the stars, or watch your kids play at the playground. With these amenities, McClain Landing offers a lifestyle that's hard to resist. Whether you're starting a family or looking for your forever home, McClain Landing provides the perfect setting to plant your roots and create lasting memories. Ready to...

Prices, plans, dimensions, features, specifications, materials, and availability of homes or communities are subject to change without notice or obligation. Illustrations are artists depictions only and may differ from completed improvements. All prices subject to change without notice. Please contact your sales associate before writing an offer.



ELEVATION D



Prices, plans, dimensions, features, specifications, materials, and availability of homes or communities are subject to change without notice or obligation. Illustrations are artists depictions only and may differ from completed improvements. All prices subject to change without notice. Please contact your sales associate before writing an offer.