



**STONE MARTIN
BUILDERS**



310 Ananias Street

Troy, AL 36079

Walter's Branch

\$374,289

Plan: Overton

SQ FT: 2,682

Beds: 4

Baths: 2.5

Garage: 2

ABOUT THIS HOUSE

The "Overton" is a 1 ½ story open floorplan with ample possibilities. This four bedroom, two and a half bath plan with bonus room begins with a refined foyer entry way that opens into a roomy living area with a vaulted ceiling. Next experience the open kitchen with large center island and adjoining dining room. The kitchen offers built in appliances, granite countertops and an expanded pantry. The primary quarters provide a large bedroom and walk in closet as well as a luxurious bathroom complete with a double granite vanity, garden/soaking tub, and tiled shower with glass door. The bonus room located upstairs includes a half bath and has plenty of possibilities as an entertainment area or extra bedroom. This layout truly is a must see!

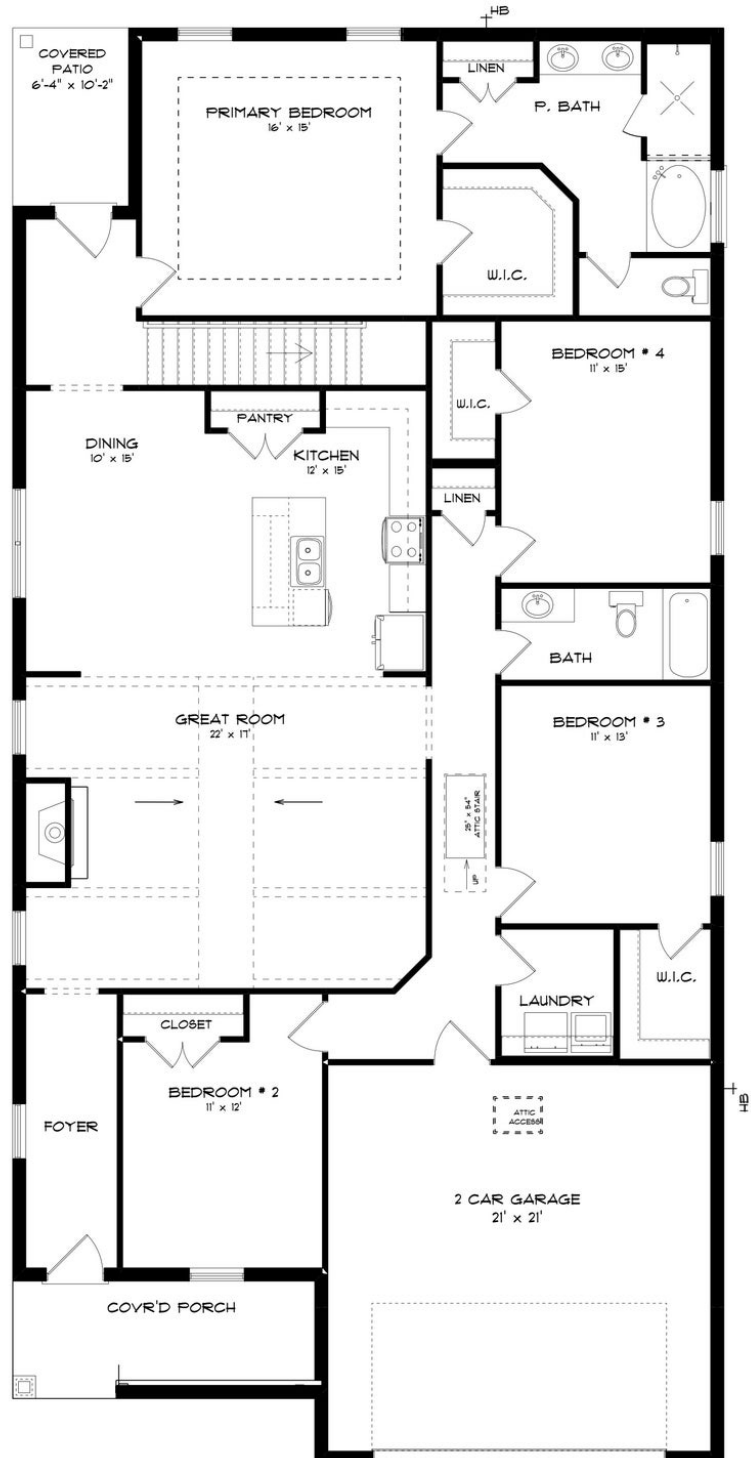
ABOUT WALTER'S BRANCH

Stone Martin Builders wants to help you Splash into Savings on a new home! Ask a Sales Professional about our special incentives and new home savings! Discover the ideal blend of southern charm and modern living at Walter's Branch, a new home community in Troy, AL. Nestled off Trojan Parkway, this enclave offers the perfect balance between the heart of the city and serene living. Just minutes from shopping, dining, entertainment, and Troy University—Home of the Troy Trojans—Walter's Branch provides convenience without compromising tranquility. Explore homes with spacious floorplans that seamlessly marry functionality and comfort, embodying Stone Martin Builders' commitment to thoughtful design. Step into the heart of your home—the gourmet kitchens, where culinary aspirations meet stylish design, creating spaces that cater to every lifestyle. Embrace the future with integrated smart home connectivity, seamlessly woven into the fabric of your home. From climate control to advanced security features, these modern technologies enhance your daily living experience, ensuring your home is both efficient and intelligent. Walter's Branch not only offers the comfort of city living but also easy access to the Troy SportsPlex and nature trails. Ready to experience the Stone Martin Builders difference? Schedule a visit to Walter's Branch and consult with our knowledgeable Sales Professionals. Explore available homes, envision your future, and embark on the journey to find your dream...

Prices, plans, dimensions, features, specifications, materials, and availability of homes or communities are subject to change without notice or obligation. Illustrations are artists depictions only and may differ from completed improvements. All prices subject to change without notice. Please contact your sales associate before writing an offer.



FIRST FLOOR (C)



Prices, plans, dimensions, features, specifications, materials, and availability of homes or communities are subject to change without notice or obligation. Illustrations are artists depictions only and may differ from completed improvements. All prices subject to change without notice. Please contact your sales associate before writing an offer.



SECOND FLOOR (C)

