



**STONE MARTIN
BUILDERS**



**108 Hillston Drive
Wetumpka, AL 36093
Coventry**

\$456,874

Plan: Alexandria

SQ FT: 2,705

Beds: 4

Baths: 3.0

Garage: 2

ABOUT THIS HOUSE

The "Alexandria" is sure to provide a delightful living experience with its one story design and easy access and flow from room to room. This Ranch-style home is sure to please! The appealing entry foyer is sophisticated yet open and joins the formal dining room and offers an additional room useful as a study or living room. The open vaulted family room and kitchen with large center granite island is made for entertaining. The unique primary suite offers a large bedroom area, functional primary bath with split granite vanities, garden/soaking tub and tiled shower with glass door and his and hers walk in closets. The additional 3 bedrooms provide plenty of closet space and two additional bathrooms. This highly desirable plan is perfect for multiple lifestyles.

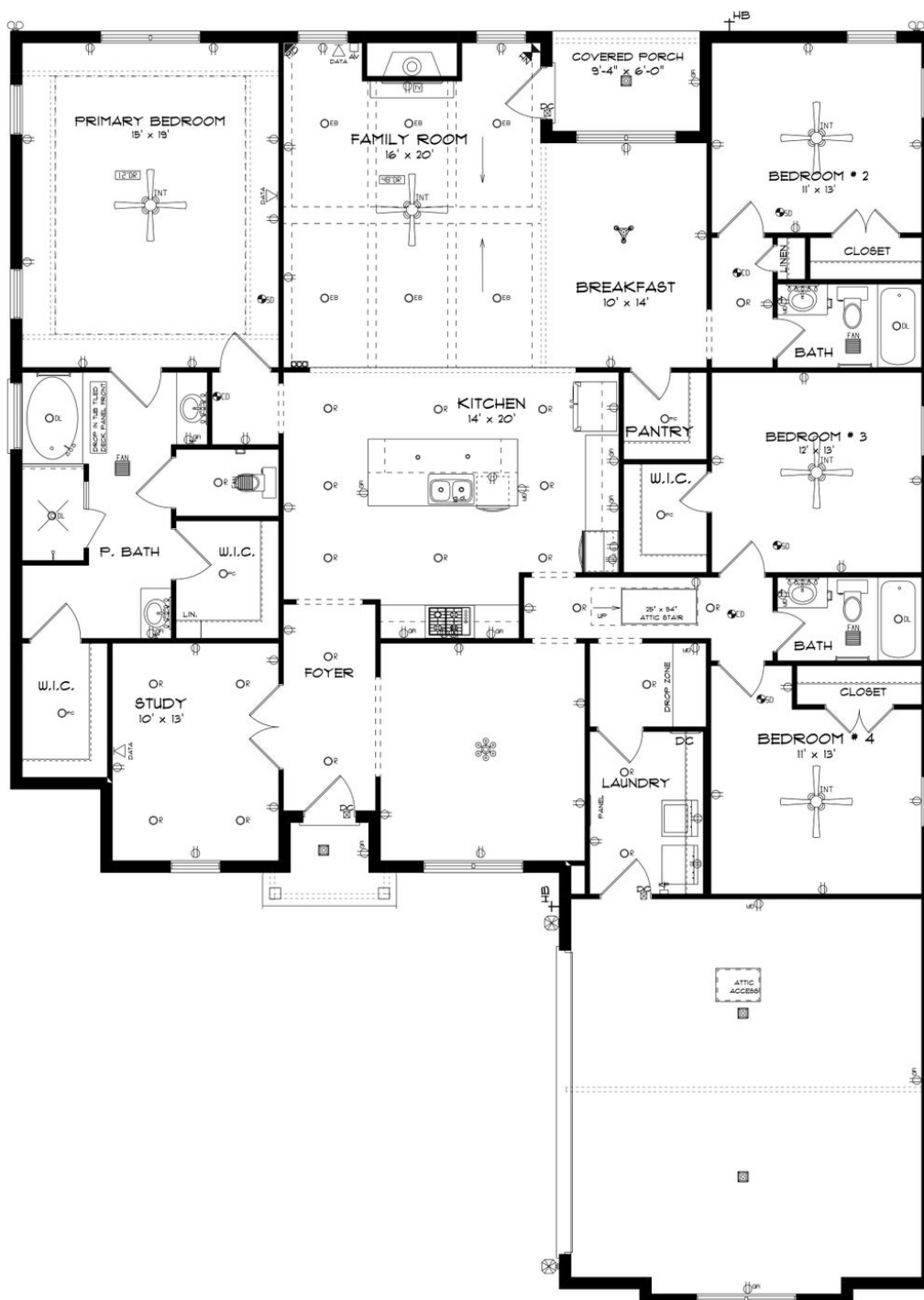
ABOUT COVENTRY

Stone Martin Builders wants to help you Spring into Savings on a new home! Ask a Sales Professional about our special incentives and new home savings! Welcome to Coventry, Stone Martin Builders' premier subdivision in the scenic Wetumpka, Alabama. Nestled in the highly sought-after Redland School District, this vibrant community offers a tranquil country setting with easy access to nearby amenities and major military bases. Discover the epitome of modern living at Coventry, where spacious floorplans and thoughtful design details await. Each home boasts gourmet kitchens equipped with top-of-the-line appliances, integrated smart home connectivity, and high-quality construction for lasting durability. Experience the essence of community living with our included amenities, including a sparkling community pool, inviting resident clubhouse, pickleball court, and a playground for endless fun. Connect with neighbors and forge lasting friendships in this welcoming environment. With its convenient location near Montgomery, Prattville, and local military bases, Coventry offers the perfect blend of peaceful countryside living and urban convenience. Ready to experience the Stone Martin Builders difference? Schedule a visit to Coventry and meet with our knowledgeable Sales Professionals. Explore available homes and embark on the journey to find your personal oasis in Wetumpka, AL.

Prices, plans, dimensions, features, specifications, materials, and availability of homes or communities are subject to change without notice or obligation. Illustrations are artists depictions only and may differ from completed improvements. All prices subject to change without notice. Please contact your sales associate before writing an offer.



STONE MARTIN BUILDERS



Prices, plans, dimensions, features, specifications, materials, and availability of homes or communities are subject to change without notice or obligation. Illustrations are artists depictions only and may differ from completed improvements. All prices subject to change without notice. Please contact your sales associate before writing an offer.