



**STONE MARTIN
BUILDERS**



**193 Rodney Lane
Wetumpka, AL 36093
Coventry**

\$514,374

Plan: Dogwood II

SQ FT: 3,706

Beds: 4

Baths: 4.0

Garage: 2

ABOUT THIS HOUSE

This plan is sure to steal the show, just like a dogwood tree in full bloom. The long front porch is a perfect primer for all of the beauty housed in these four walls. The entryway is flanked with a study on one side and a formal dining on the other, and then you are lead directly into the large kitchen. An abundance of storage, both in cabinets and in the pantry, coupled with the large eat in island make this space a chef's dream. The kitchen flows seamlessly into the large great room with a corner fireplace and wall of windows looking out onto the covered porch on the rear of the home. Off to one side of the main living area you'll find the primary suite that leaves nothing to be desired: tray ceilings, soaking bathtub, roomy shower, and one of the largest walk-in closets we have ever laid eyes on. The opposite side of the main living area is home to three additional bedrooms and two full bathrooms, plus a drop zone and laundry room that lead into the garage. On the 2nd floor there is a large Bonus Room with a sitting area and full bath. What more could you need in a home?!

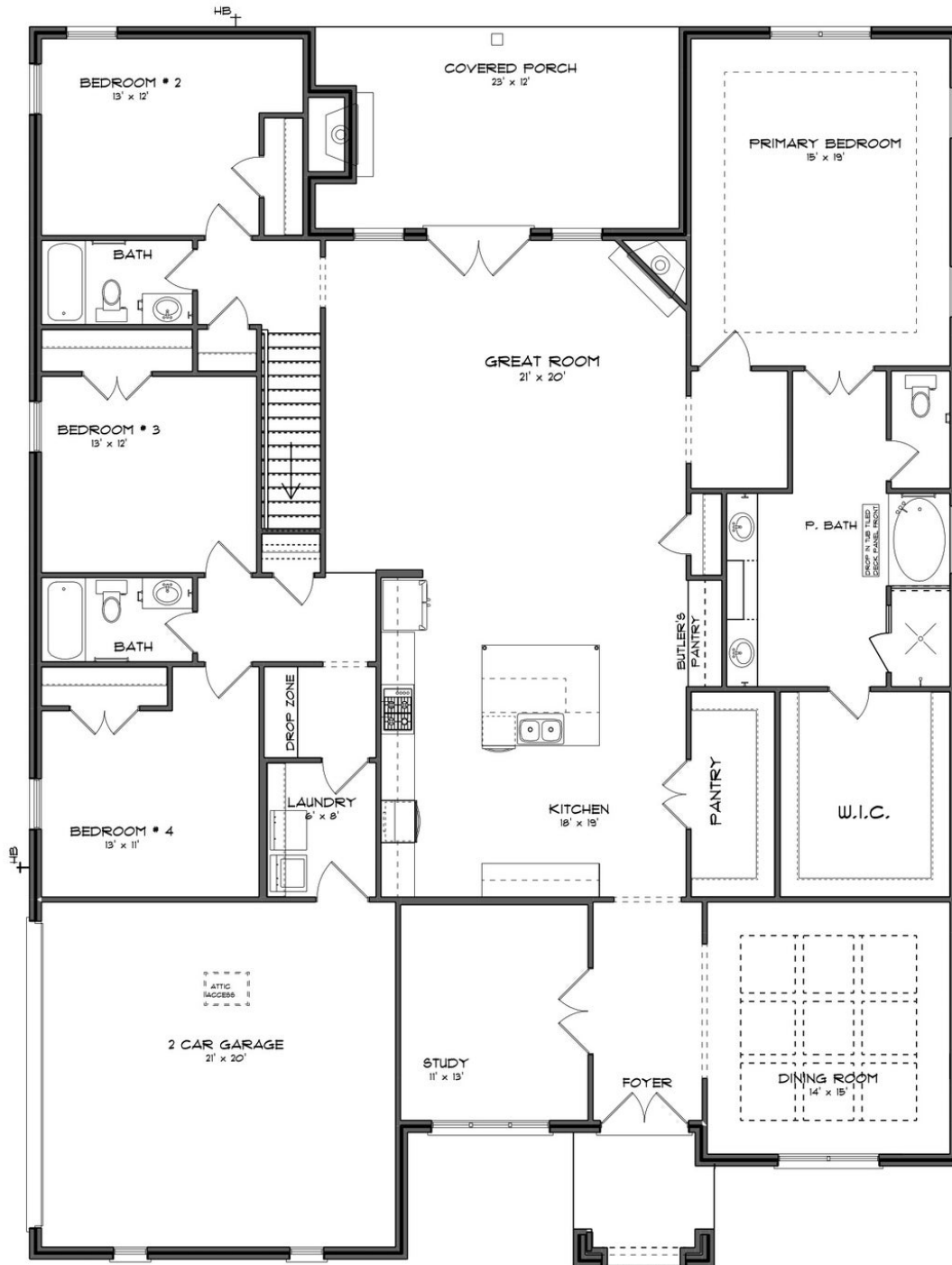
ABOUT COVENTRY

Stone Martin Builders wants to help you Splash into Savings on a new home! Ask a Sales Professional about our special incentives and new home savings! Welcome to Coventry, Stone Martin Builders' premier subdivision in the scenic Wetumpka, Alabama. Nestled in the highly sought-after Redland School District, this vibrant community offers a tranquil country setting with easy access to nearby amenities and major military bases. Discover the epitome of modern living at Coventry, where spacious floorplans and thoughtful design details await. Each home boasts gourmet kitchens equipped with top-of-the-line appliances, integrated smart home connectivity, and high-quality construction for lasting durability. Experience the essence of community living with our included amenities, including a sparkling community pool, inviting resident clubhouse, pickleball court, and a playground for endless fun. Connect with neighbors and forge lasting friendships in this welcoming environment. With its convenient location near Montgomery, Prattville, and local military bases, Coventry offers the perfect blend of peaceful countryside living and urban convenience. Ready to experience the Stone Martin Builders difference? Schedule a visit to Coventry and meet with our knowledgeable Sales Professionals. Explore available homes and embark on the journey to find your personal oasis in Wetumpka, AL.

Prices, plans, dimensions, features, specifications, materials, and availability of homes or communities are subject to change without notice or obligation. Illustrations are artists depictions only and may differ from completed improvements. All prices subject to change without notice. Please contact your sales associate before writing an offer.



FIRST FLOOR (G)



Prices, plans, dimensions, features, specifications, materials, and availability of homes or communities are subject to change without notice or obligation. Illustrations are artists depictions only and may differ from completed improvements. All prices subject to change without notice. Please contact your sales associate before writing an offer.



SECOND FLOOR (G)



Prices, plans, dimensions, features, specifications, materials, and availability of homes or communities are subject to change without notice or obligation. Illustrations are artists depictions only and may differ from completed improvements. All prices subject to change without notice. Please contact your sales associate before writing an offer.