



**STONE MARTIN  
BUILDERS**



**363 Midland Drive  
Wetumpka, AL 36093**

**Coventry**

**\$469,483**

**Plan:** Bellemeade II

**SQ FT:** 3,094

**Beds:** 4

**Baths:** 4.5

**Garage:** 2

## ABOUT THIS HOUSE

Experience the captivating allure of the Bellemeade II, boasting 4 bedrooms and 4.5 bathrooms. Step into an inviting study from the covered porch. Entertain seamlessly in the expansive kitchen and great room with vaulted ceilings and a cozy fireplace. The kitchen dazzles with a grand island and large pantry, perfect for hosting gatherings. The primary suite indulges with double granite vanities, a garden tub, separate shower, and ample closet space. The first floor offers 3 additional bedrooms and 2 baths, ideal for guests. Upstairs, a spacious bonus room and full bath await, promising endless entertainment possibilities.

## ABOUT COVENTRY

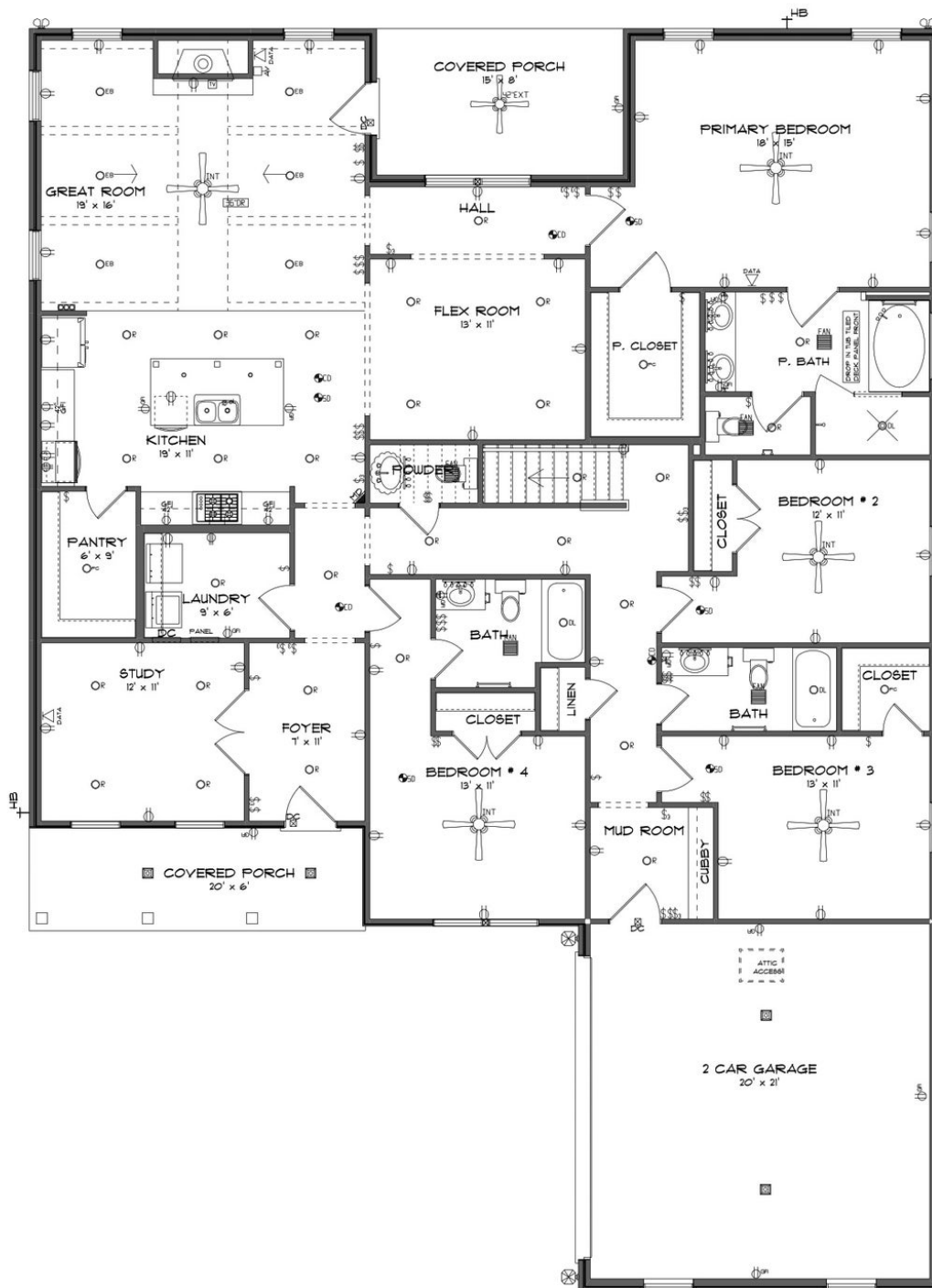
Stone Martin Builders wants to help you Spring into Savings on a new home! Ask a Sales Professional about our special incentives and new home savings! Welcome to Coventry, Stone Martin Builders' premier subdivision in the scenic Wetumpka, Alabama. Nestled in the highly sought-after Redland School District, this vibrant community offers a tranquil country setting with easy access to nearby amenities and major military bases. Discover the epitome of modern living at Coventry, where spacious floorplans and thoughtful design details await. Each home boasts gourmet kitchens equipped with top-of-the-line appliances, integrated smart home connectivity, and high-quality construction for lasting durability. Experience the essence of community living with our included amenities, including a sparkling community pool, inviting resident clubhouse, pickleball court, and a playground for endless fun. Connect with neighbors and forge lasting friendships in this welcoming environment. With its convenient location near Montgomery, Prattville, and local military bases, Coventry offers the perfect blend of peaceful countryside living and urban convenience. Ready to experience the Stone Martin Builders difference? Schedule a visit to Coventry and meet with our knowledgeable Sales Professionals. Explore available homes and embark on the journey to find your personal oasis in Wetumpka, AL.

Prices, plans, dimensions, features, specifications, materials, and availability of homes or communities are subject to change without notice or obligation. Illustrations are artists depictions only and may differ from completed improvements. All prices subject to change without notice. Please contact your sales associate before writing an offer.



**STONE MARTIN  
BUILDERS**

## FIRST FLOOR

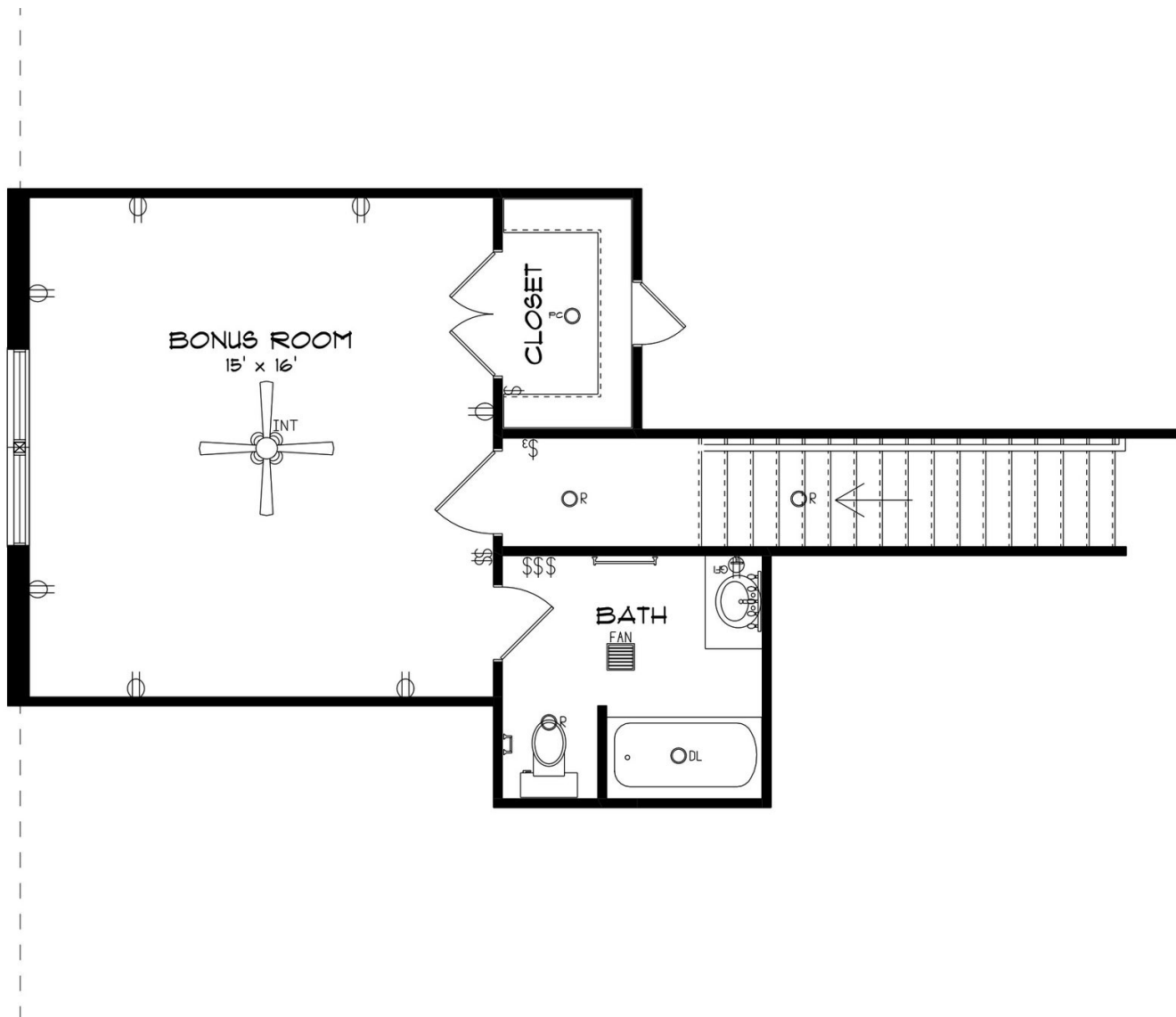


Prices, plans, dimensions, features, specifications, materials, and availability of homes or communities are subject to change without notice or obligation. Illustrations are artists depictions only and may differ from completed improvements. All prices subject to change without notice. Please contact your sales associate before writing an offer.



**STONE MARTIN  
BUILDERS**

## SECOND FLOOR



Prices, plans, dimensions, features, specifications, materials, and availability of homes or communities are subject to change without notice or obligation. Illustrations are artists depictions only and may differ from completed improvements. All prices subject to change without notice. Please contact your sales associate before writing an offer.