



**STONE MARTIN
BUILDERS**

Contact Our Sales Team
Ashley Durham, Sales Manager
334-742-8050 | sales@stonemartinbuilders.com



Barrington

Home Plan

Starting at \$None

SQ FT: 2,022

Beds: 3

Baths: 2.0

Garage: 2

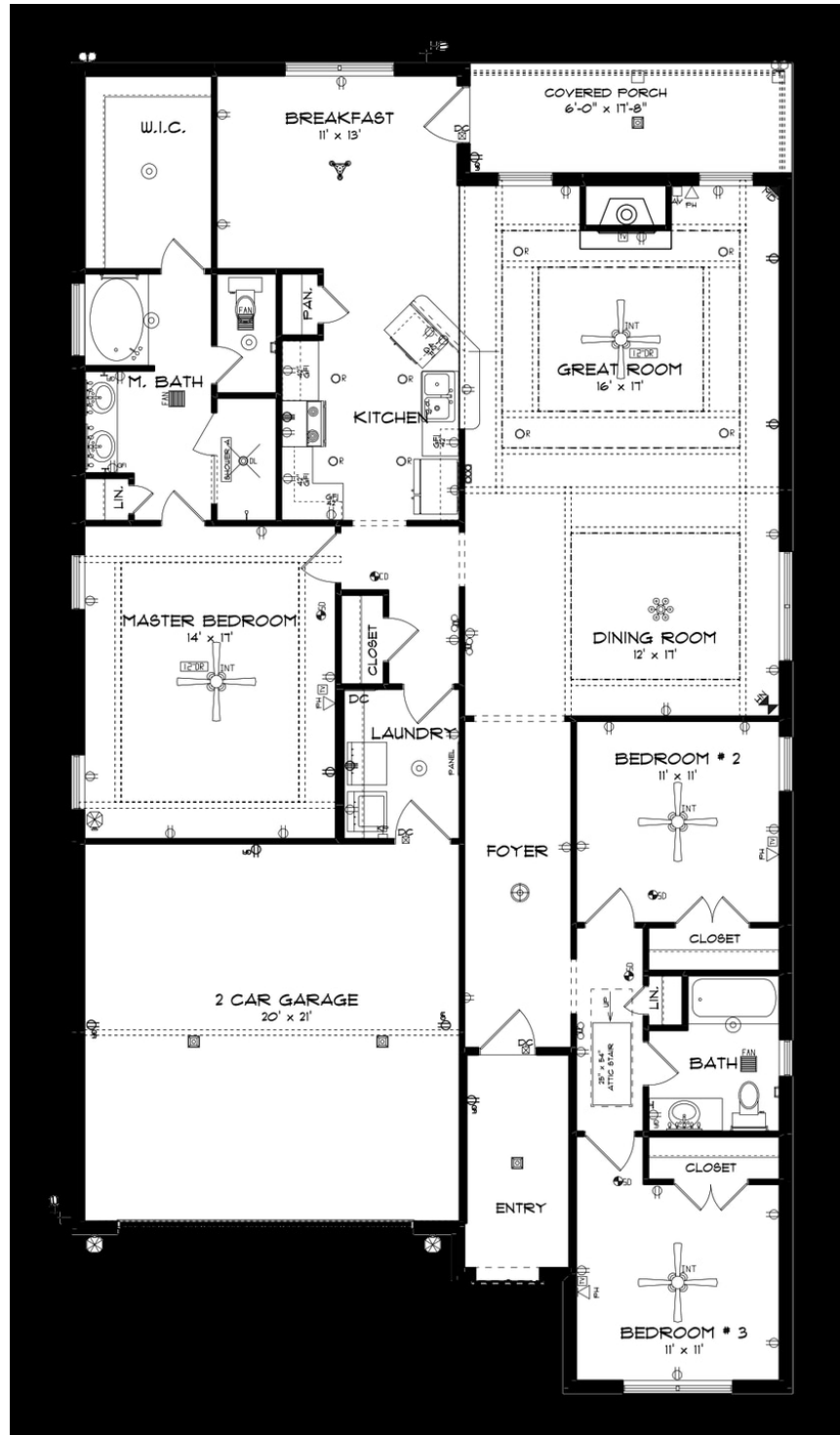
ABOUT THIS PLAN

Showcase quality, all on one level, the "Barrington" and its irresistible layout offer a great plan for those who need less square footage, but uncompromising use of space. Charming foyer with rich hardwood flooring that extends to the dining/great room area is sure to make a great first impression on guests while providing comfort and durability. Breakfast room joined to the fabulous kitchen, makes for an additional seating area for guests or family. Stunning ceilings, raised to appeal, give a sense of grand height and masterful detail. Private master suite is strategically placed away from the other sleeping quarters for optimum privacy. Retreat to the rear covered patio, offering shade and a peaceful setting. Convenient two car garage that is hardly seen on a house of this size allows the ease and comfort of storing automobiles.

Prices, plans, dimensions, features, specifications, materials, and availability of homes or communities are subject to change without notice or obligation. Illustrations are artists depictions only and may differ from completed improvements. All prices subject to change without notice. Please contact your sales associate before writing an offer.



FIRST FLOOR



Prices, plans, dimensions, features, specifications, materials, and availability of homes or communities are subject to change without notice or obligation. Illustrations are artists depictions only and may differ from completed improvements. All prices subject to change without notice. Please contact your sales associate before writing an offer.