



**STONE MARTIN
BUILDERS**

Contact Our Sales Team
Ashley Durham, Sales Manager
334-742-8050 | sales@stonemartinbuilders.com



Berkshire

Home Plan

Starting at \$None

SQ FT: 1,596

Beds: 3

Baths: 2.0

Garage: 2

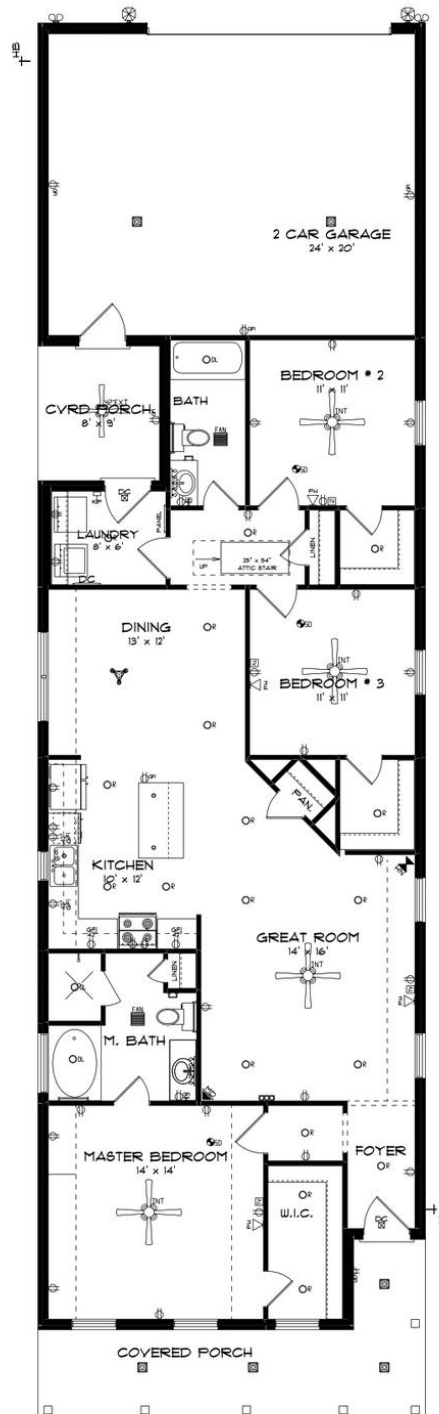
ABOUT THIS PLAN

Spectacular design with emphasis on use of space, the "Berkshire" plan offers versatile yet comfortable options. Grand entry foyer opens to huge great room with volume ceiling. Entertaining is a breeze with room to mingle in the large dining/great room area. Separated bedrooms with the master at the front of the house is the most appealing aspect of this plan. Gracious master bath is designed for comfort, yet features sophisticated upgrades such as garden/soaking tub, separate full tiled shower, and granite vanity. Functional laundry room is off the kitchen providing noise reduction for the rest of the house. Step onto the covered rear patio for a cook out or just a place to retreat from the stress of the day.

Prices, plans, dimensions, features, specifications, materials, and availability of homes or communities are subject to change without notice or obligation. Illustrations are artists depictions only and may differ from completed improvements. All prices subject to change without notice. Please contact your sales associate before writing an offer.



FIRST FLOOR



Prices, plans, dimensions, features, specifications, materials, and availability of homes or communities are subject to change without notice or obligation. Illustrations are artists depictions only and may differ from completed improvements. All prices subject to change without notice. Please contact your sales associate before writing an offer.