



**STONE MARTIN
BUILDERS**

Contact Our Sales Team
Online Sales Consultant
334-645-9700 | hello@stonemartinbuilders.com



Hartwell II

Home Plan

SQ FT: 3,146

Beds: 4

Baths: 4.0

Garage: 2



ABOUT THIS PLAN

We know one thing for certain – the Hartwell is going to make your heart swell. A quaint covered porch opens into a foyer with adjoining dining room. The coffered ceiling and wainscoting pile on the character in these spaces and are a great primer for what's to come: the wide open great room, breakfast area, and kitchen. The unhindered flow between these three rooms makes this the perfect space for entertaining, and easy access to the dining room through a cased opening ensures that your dinner parties will be nearly effortless. One side of the house is home to the primary suite, with large walk in closet and spa-like bathroom, and another bedroom with adjacent bathroom, which could be home to a nursery or home office. On the other side of the home you'll find two additional bedrooms, a full bath, and the laundry room, plus access to the garage through the mudroom hallway. The Hartwell also features multiple linen closets and dual pantries, so you certainly won't be lacking in storage! The 2nd floor features a large Bonus Room with a full bath and walk-in-closet.

Prices, plans, dimensions, features, specifications, materials, and availability of homes or communities are subject to change without notice or obligation. Illustrations are artists depictions only and may differ from completed improvements. All prices subject to change without notice. Please contact your sales associate before writing an offer.



Contact Our Sales Team
Online Sales Consultant
334-645-9700 | hello@stonemartinbuilders.com

This detailed floor plan shows a 2-car garage house with the following layout:

- Garage:** 2 CAR GARAGE (21' x 21')
- Entry:** FOYER (6' x 11')
- Living Areas:** GREAT ROOM (16' x 19'), BREAKFAST (12' x 13'), DINING ROOM (13' x 11'), KITCHEN (10' x 16').
- Bedrooms:** PRIMARY BEDROOM (15' x 13'), BEDROOM # 2 (12' x 13'), BEDROOM # 3 (11' x 12'), BEDROOM # 4 (12' x 13').
- Bathrooms:** P. BATH, BATH, and a half-bath (H.B.).
- Other Rooms:** W.I.C. (Wardrobe/In-Closet), LAUNDRY (8' x 11'), MUD ROOM, and a COVERED PATIO (12' x 14').
- Storage:** Multiple closets including a linen closet, a drop zone, and a closet for the 2nd bedroom.
- Attic:** ATTIC ACCESS is shown in the garage area.

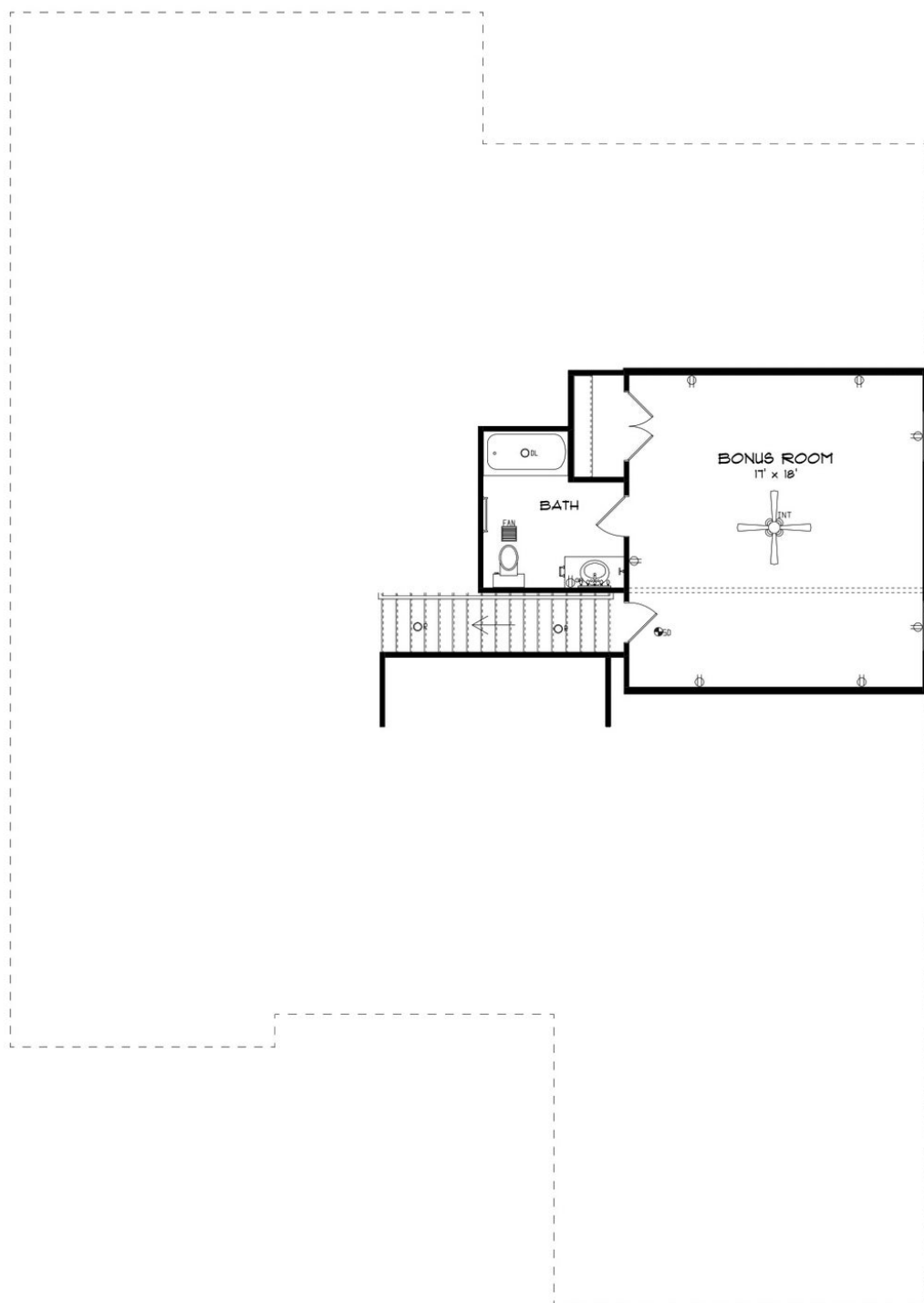
Prices, plans, dimensions, features, specifications, materials, and availability of homes or communities are subject to change without notice or obligation. Illustrations are artists depictions only and may differ from completed improvements. All prices subject to change without notice. Please contact your sales associate before writing an offer.



**STONE MARTIN
BUILDERS**

Contact Our Sales Team
Online Sales Consultant
334-645-9700 | hello@stonemartinbuilders.com

SECOND FLOOR



Prices, plans, dimensions, features, specifications, materials, and availability of homes or communities are subject to change without notice or obligation. Illustrations are artists depictions only and may differ from completed improvements. All prices subject to change without notice. Please contact your sales associate before writing an offer.



**STONE MARTIN
BUILDERS**

Contact Our Sales Team
Online Sales Consultant
334-645-9700 | hello@stonemartinbuilders.com

PLAN GALLERY



Prices, plans, dimensions, features, specifications, materials, and availability of homes or communities are subject to change without notice or obligation. Illustrations are artists depictions only and may differ from completed improvements. All prices subject to change without notice. Please contact your sales associate before writing an offer.



**STONE MARTIN
BUILDERS**

Contact Our Sales Team
Online Sales Consultant
334-645-9700 | hello@stonemartinbuilders.com

PLAN GALLERY



Prices, plans, dimensions, features, specifications, materials, and availability of homes or communities are subject to change without notice or obligation. Illustrations are artists depictions only and may differ from completed improvements. All prices subject to change without notice. Please contact your sales associate before writing an offer.



**STONE MARTIN
BUILDERS**

Contact Our Sales Team
Online Sales Consultant
334-645-9700 | hello@stonemartinbuilders.com

PLAN GALLERY



Prices, plans, dimensions, features, specifications, materials, and availability of homes or communities are subject to change without notice or obligation. Illustrations are artists depictions only and may differ from completed improvements. All prices subject to change without notice. Please contact your sales associate before writing an offer.