



**STONE MARTIN
BUILDERS**

Contact Our Sales Team
Ashley Durham, Sales Manager
334-742-8050 | sales@stonemartinbuilders.com



Milton

Home Plan

Starting at \$None

SQ FT: 1,550

Beds: 3

Baths: 2.0

Garage: 2

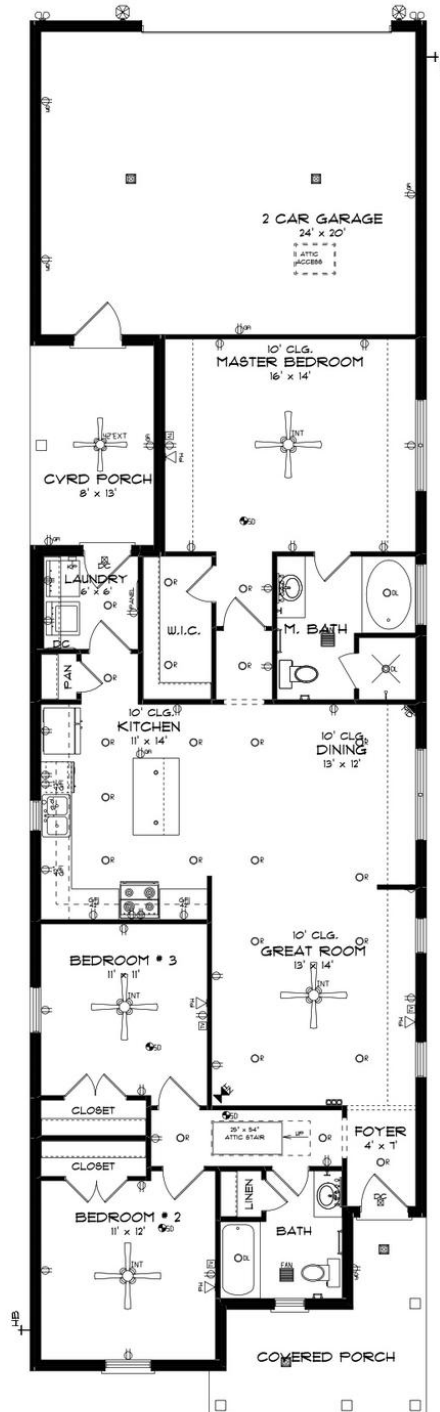
ABOUT THIS PLAN

A perfect combination of space and architectural details is found in the "Milton" floor plan with wood flooring that extends from the foyer, dining room, great room, and hallways. Owner's bedroom is strategically separated from guest rooms to allow privacy and seclusion. Delightful cook's kitchen is flanked with enormous counter space and convenient breakfast bar that opens to grand dining room and great room with volume ceiling. Finely appointed features to this plan include large guest bedrooms, durable tile flooring in kitchen and bath, as well as comfortable covered patio for year round enjoyment. Use of square footage is optimized in this house that will suit all needs to promote a comfortable lifestyle and provide endless possibilities.

Prices, plans, dimensions, features, specifications, materials, and availability of homes or communities are subject to change without notice or obligation. Illustrations are artists depictions only and may differ from completed improvements. All prices subject to change without notice. Please contact your sales associate before writing an offer.



FIRST FLOOR



Prices, plans, dimensions, features, specifications, materials, and availability of homes or communities are subject to change without notice or obligation. Illustrations are artists depictions only and may differ from completed improvements. All prices subject to change without notice. Please contact your sales associate before writing an offer.