



**STONE MARTIN
BUILDERS**

Contact Our Sales Team
Ashley Durham, Sales Manager
334-742-8050 | sales@stonemartinbuilders.com



Norwick

Home Plan

Starting at \$None

SQ FT: 2,694

Beds: 4

Baths: 3.5

Garage: 3

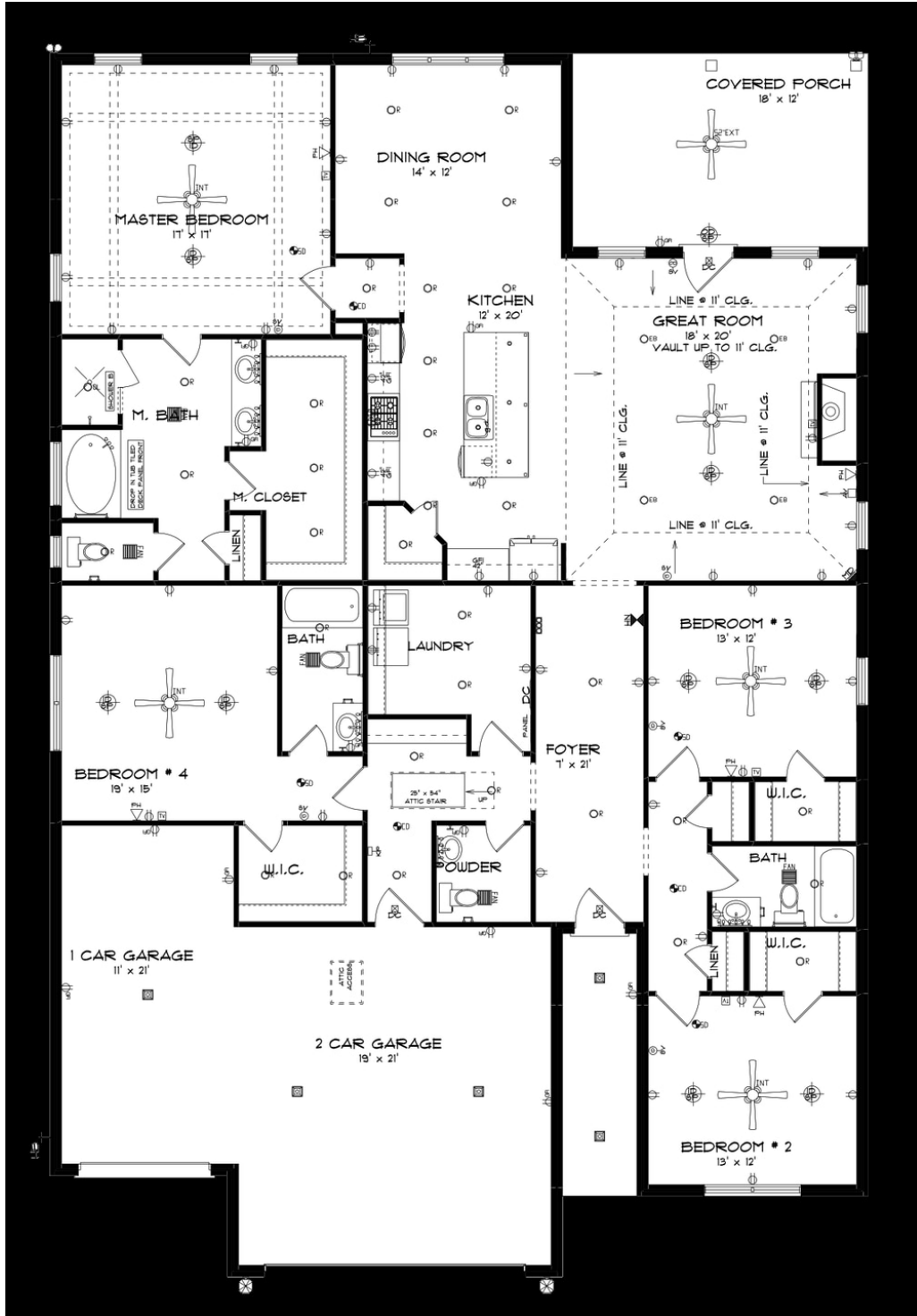
ABOUT THIS PLAN

The "Norwick" would light up anyone's eye as soon as they stepped into the gorgeous elongated foyer. Grandeur and spacious, alongside functional, the 3 additional bedrooms have been created with walk in closets, and bathrooms with stunning soaking bathtubs and granite vanities. Tucked in the back, the large master bedroom is an assured peaceful retreat off the dining. The master bath is equipped with double granite vanities, soaking tub, separate tiled shower with a glass door, and a spacious walk in closet. The rear covered patio provides ample shade and a peaceful setting. The sizable great room flows into the open kitchen complete with a spacious, granite island and large pantry. The "Norwick" floor plan accommodates for multi-generational families with the 3 distinct sleeping areas and an in-suite for parents or a grown child moving back home. The plan is rounded

Prices, plans, dimensions, features, specifications, materials, and availability of homes or communities are subject to change without notice or obligation. Illustrations are artists depictions only and may differ from completed improvements. All prices subject to change without notice. Please contact your sales associate before writing an offer.



FIRST FLOOR



Prices, plans, dimensions, features, specifications, materials, and availability of homes or communities are subject to change without notice or obligation. Illustrations are artists depictions only and may differ from completed improvements. All prices subject to change without notice. Please contact your sales associate before writing an offer.