



**STONE MARTIN
BUILDERS**

Contact Our Sales Team
Online Sales Professional
334-645-9700 | hello@stonemartinbuilders.com



Thrive Ellsworth

Home Plan

SQ FT: 2,003

Beds: 3

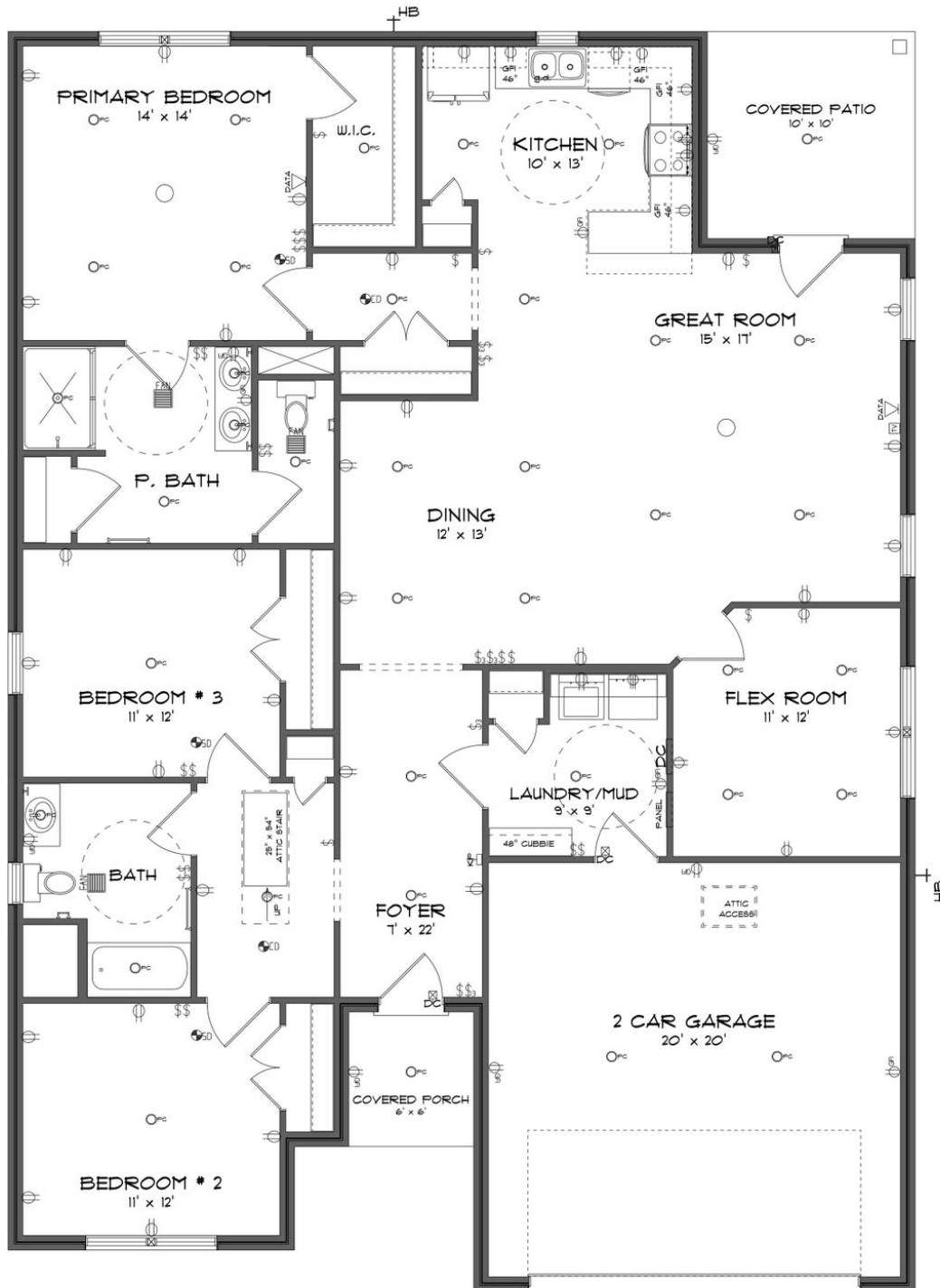
Baths: 2.0

Garage: 2

ABOUT THIS PLAN

The "Ellsworth" floorplan is a handicap accessible design that combines elegance and convenience. It includes 3 bedrooms and 2 bathrooms. Through the foyer is an open great room and dining room, which is perfect for entertaining and connecting. With luxury vinyl flooring, the "Ellsworth" makes an unforgettable impression. The primary retreat is complete with a luxurious walk-in closet and garden tub/shower combo. The great room opens to a covered patio and flex room for ample space. The "Ellsworth" is sure to be a perfect fit for all occasions!

Prices, plans, dimensions, features, specifications, materials, and availability of homes or communities are subject to change without notice or obligation. Illustrations are artists depictions only and may differ from completed improvements. All prices subject to change without notice. Please contact your sales associate before writing an offer.



Prices, plans, dimensions, features, specifications, materials, and availability of homes or communities are subject to change without notice or obligation. Illustrations are artists depictions only and may differ from completed improvements. All prices subject to change without notice. Please contact your sales associate before writing an offer.