



**STONE MARTIN
BUILDERS**

Contact Our Sales Team
Online Sales Professional
334-645-9700 | hello@stonemartinbuilders.com



Thrive Sycamore

Home Plan

SQ FT: 2,036

Beds: 4

Baths: 2.0

Garage: 2

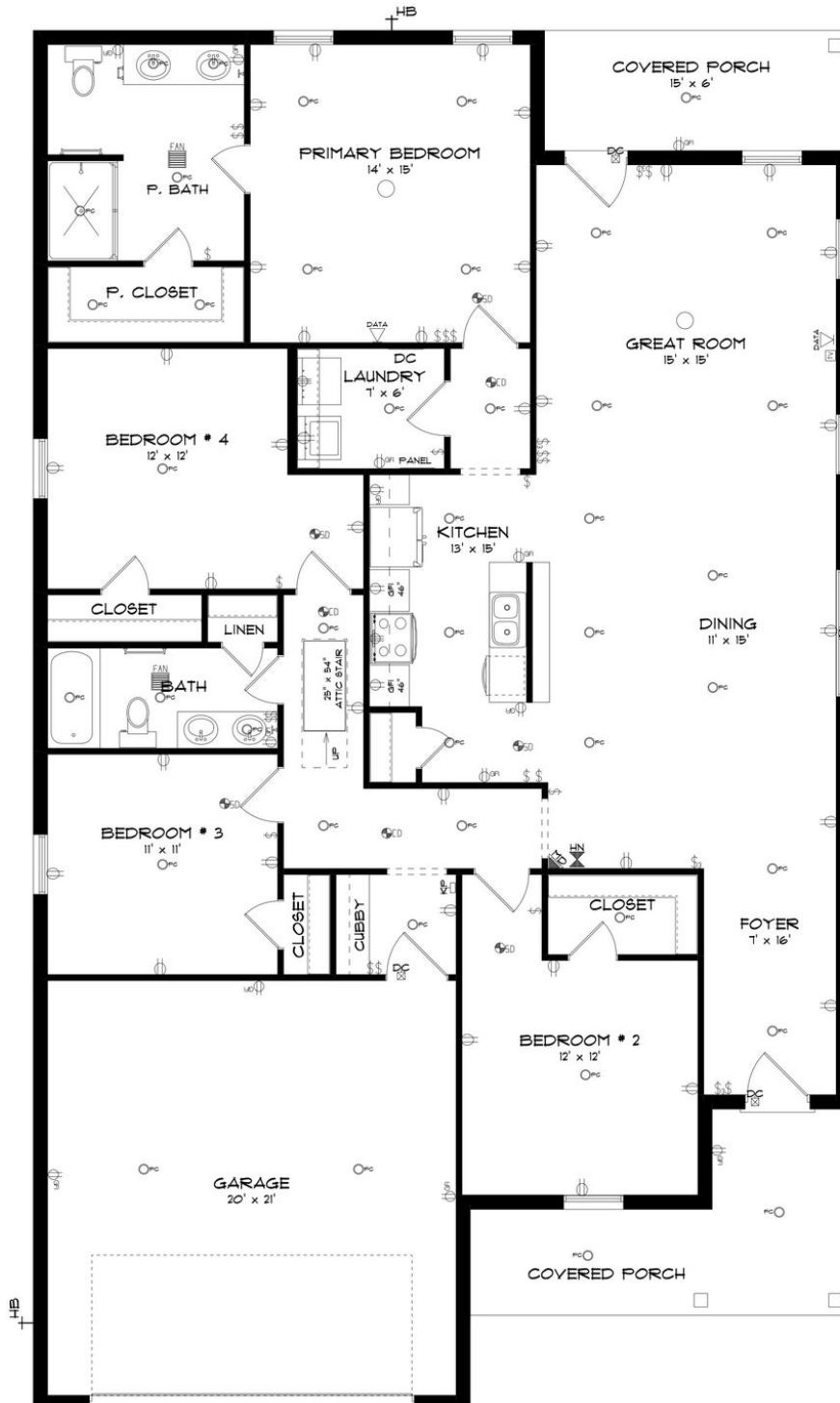
ABOUT THIS PLAN

Welcome to the Sycamore – where style meets functionality. A warm foyer sets the stage for elegance. The heart of the home opens to an expansive dining room and great room, perfect for gatherings in natural light. The kitchen boasts a spacious granite-topped island, connecting you with guests. Your private retreat awaits in the primary bedroom with a dual-sink bath and ample closet space. The 2-car garage leads to a practical mudroom with a built-in cubby. Three extra bedrooms offer versatility, as well as a 2nd bathroom with a dual vanity. The Sycamore: Your canvas for a space you'll love. Welcome home!

Prices, plans, dimensions, features, specifications, materials, and availability of homes or communities are subject to change without notice or obligation. Illustrations are artists depictions only and may differ from completed improvements. All prices subject to change without notice. Please contact your sales associate before writing an offer.



FIRST FLOOR



Prices, plans, dimensions, features, specifications, materials, and availability of homes or communities are subject to change without notice or obligation. Illustrations are artists depictions only and may differ from completed improvements. All prices subject to change without notice. Please contact your sales associate before writing an offer.