



**STONE MARTIN  
BUILDERS**

**Contact Our Sales Team  
Online Sales Consultant  
334-645-9700 | [hello@stonemartinbuilders.com](mailto:hello@stonemartinbuilders.com)**



## **Walden**

### **Home Plan**

**SQ FT:** 3,721

**Beds:** 5

**Baths:** 3.5

**Garage:** 2

## **ABOUT THIS PLAN**

Methodical design, the "Walden" plan is unique in every way and offers different concepts than most other plans. Entertain in style where the elbow room is endless with an open feeling and limitless ranges. Dreamy primary suite makes arranging furniture a snap with massive wall space and soaring ceilings. The primary closet is larger than any bedroom in other plans and will take care of storing all necessities. Splendid kitchen is almost mesmerizing at first glance with its state of the art layout featuring custom angled granite island and stylish plumbing and lighting packages. Position the high capacity washer/dryer, as well as all cleaning gadgets in the oversized laundry room that allows a growing family another option for easy living. Loft area off the open hallway on the second floor fulfills the needs of a large family while allowing a place for the kids to hang out or provides a media/craft/home schooling room. Four spaciouly appealing bedrooms also situated on this floor complete the unbelievable design that is aimed at accommodating all needs in a family dwelling.

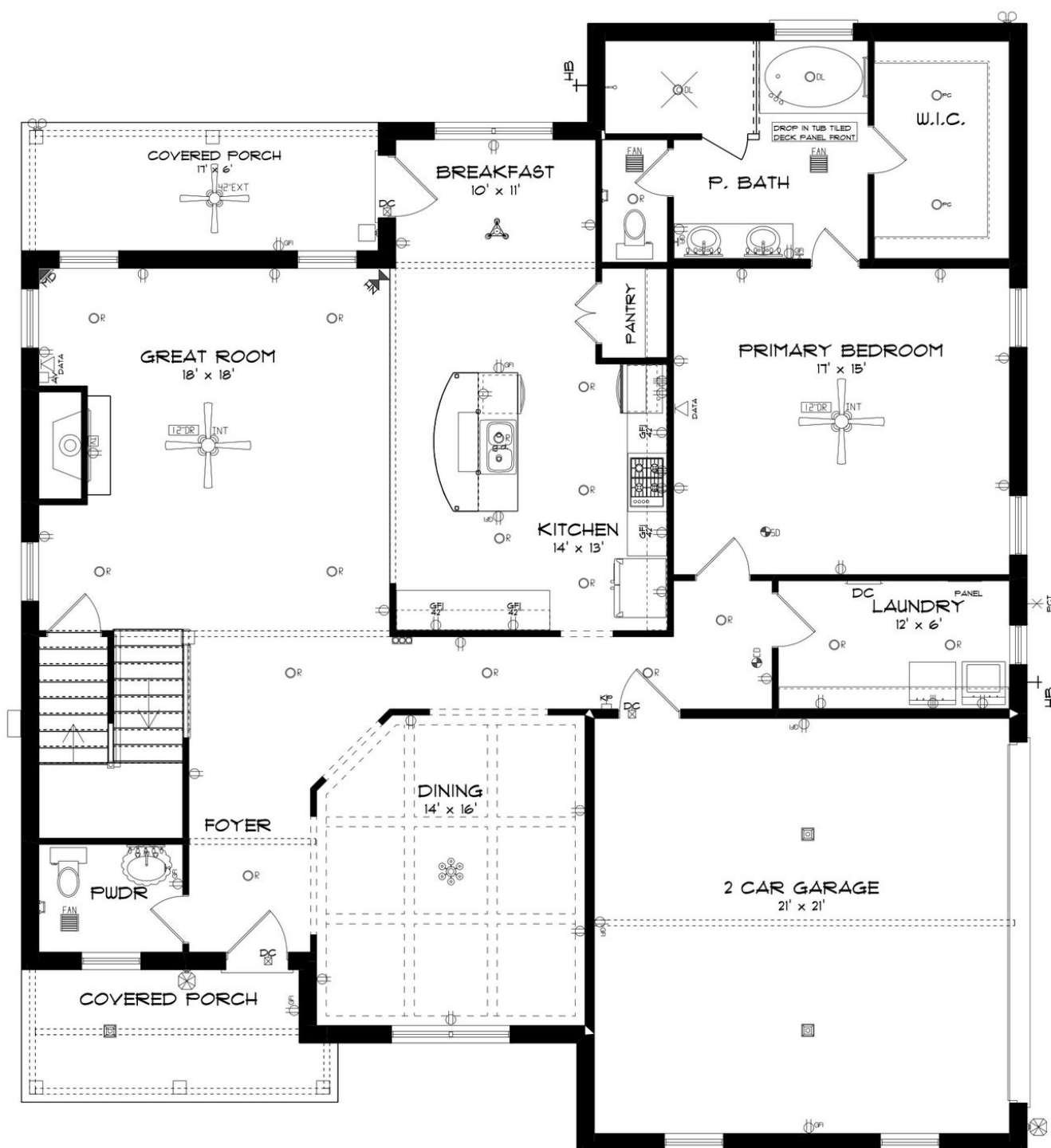
Prices, plans, dimensions, features, specifications, materials, and availability of homes or communities are subject to change without notice or obligation. Illustrations are artists depictions only and may differ from completed improvements. All prices subject to change without notice. Please contact your sales associate before writing an offer.



**STONE MARTIN  
BUILDERS**

Contact Our Sales Team  
Online Sales Consultant  
334-645-9700 | [hello@stonemartinbuilders.com](mailto:hello@stonemartinbuilders.com)

## FIRST FLOOR



Prices, plans, dimensions, features, specifications, materials, and availability of homes or communities are subject to change without notice or obligation. Illustrations are artists depictions only and may differ from completed improvements. All prices subject to change without notice. Please contact your sales associate before writing an offer.



**Contact Our Sales Team**  
**Online Sales Consultant**  
**334-645-9700 | [hello@stonemartinbuilders.com](mailto:hello@stonemartinbuilders.com)**

This floor plan illustrates a three-story residence with a total area of 2,067 square feet. The layout includes:

- LOFT**: Located at the top left, measuring 14' x 29'. It features a central ceiling fan and a door labeled "INT".
- BEDROOM # 2**: Situated below the loft, measuring 12' x 14'. It has a central ceiling fan and a door labeled "INT".
- BEDROOM # 3**: Located to the right of Bedroom #2, measuring 17' x 15'. It features a central ceiling fan and a door labeled "INT".
- BEDROOM # 4**: Located at the bottom right, measuring 12' x 21'. It has a central ceiling fan and a door labeled "INT".
- BEDROOM # 5**: Located in the center-bottom, measuring 14' x 20'. It features a central ceiling fan and a door labeled "INT". A dashed line indicates a path through the room, and arrows point towards the entrance.
- BATH**: There are two bathrooms. One is located between the Loft and Bedroom #2, featuring a bathtub, toilet, sink, and a fan. The other is located between Bedroom #3 and Bedroom #4, featuring a bathtub, toilet, sink, and a fan.
- W.I.C.**: Several walk-in closets are distributed throughout the plan, including one near the Loft, one near Bedroom #2, one near Bedroom #3, one near Bedroom #4, one near Bedroom #5, and one near the second bathroom.
- CLOSET**: A large closet is located between Bedroom #2 and Bedroom #3.
- LINEN**: A linen closet is located near the Loft and Bedroom #5.
- Attic Stair**: A set of stairs labeled "28' x 54\"

Prices, plans, dimensions, features, specifications, materials, and availability of homes or communities are subject to change without notice or obligation. Illustrations are artists depictions only and may differ from completed improvements. All prices subject to change without notice. Please contact your sales associate before writing an offer.